

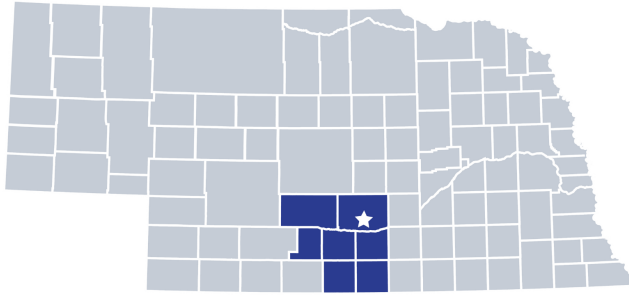
# Two Rivers Public Health Department

2022 Profile






Contact:  
**Jeremy Eschliman, Director**  
 (888) 669-7154  
[jeschliman@trphd.org](mailto:jeschliman@trphd.org)  
[www.trphd.org](http://www.trphd.org)

Two Rivers Public Health Department is locally governed and serves all **97,706** residents in **Buffalo, Dawson, Gosper, Kearney, Phelps, Harlan, and Franklin** Counties.



## Our Priorities

Public health priority areas included in our current Community Health Improvement Plan (CHIP):

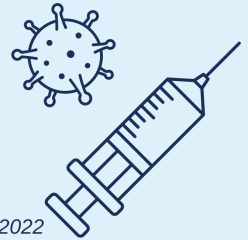
-  **Access to Care**
-  **Safe Environment**
-  **Mental Health and Suicide Prevention**

## COVID-19 Local Progress

Over the last two years, health departments have been the frontlines of the COVID-19 response.

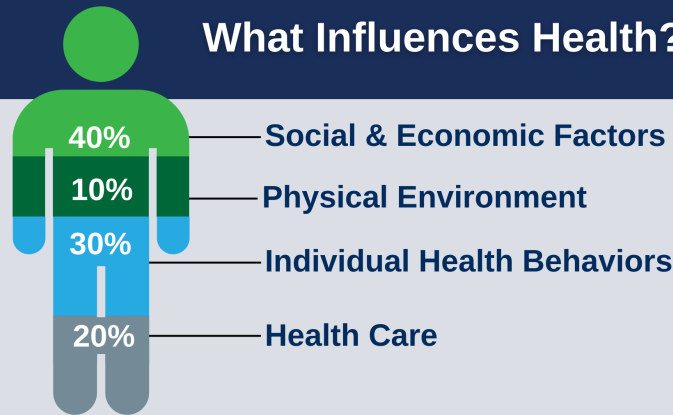
## Vaccinated & Boosted as of March 2022

- 24.0%** Two Rivers
- 30.7%** Nebraska
- 29.2%** National



Source: Centers for Disease Control COVID Data Tracker, as of March 25, 2022

## What Influences Health?



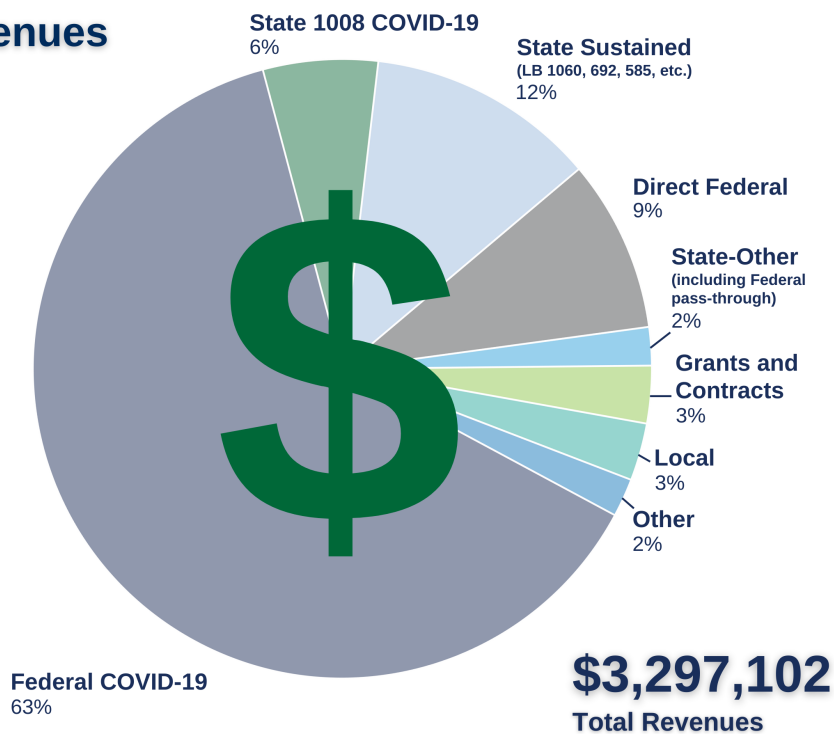
**80%** of what influences health and wellbeing occurs outside of the clinical care setting - in homes, workplaces, schools, and communities.

Local health departments (LHDs) are Chief Health Strategists - partnering across sectors to promote safety, prevention, and wellness to address that 80%.

## Core Functions & 10 Essential Services of Public Health



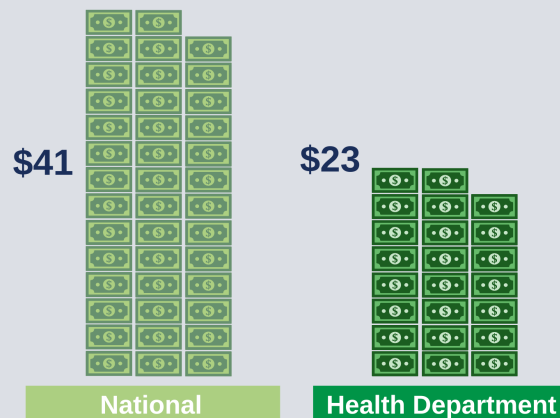
## Revenues



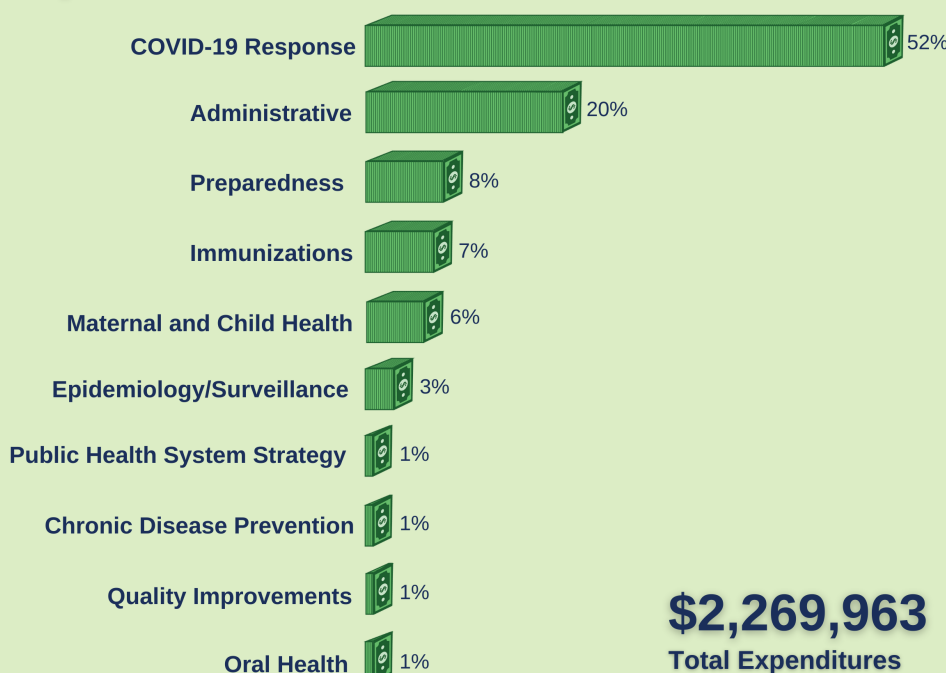
## Worth the investment.

Every **\$1** invested in prevention **saves \$5.60** in health care costs!

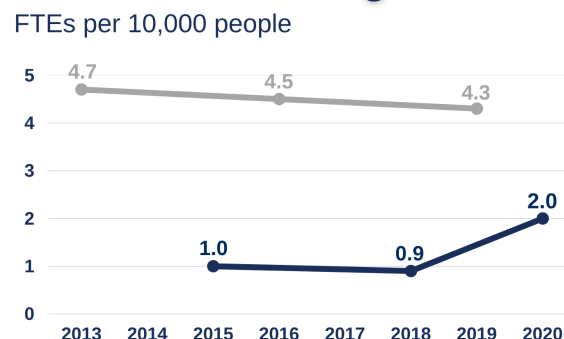
### Per Capita Expenditures



## Expenditures



## Workforce Shortages



Two Rivers

National

(among LHDs serving 50,000 to 499,000 people)

Source for national data: NACCHO - National Profile of Local Health Departments, 2019

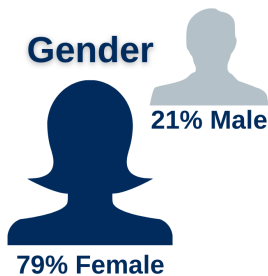
Two Rivers Public Health Department has **fewer staff per capita** than similar-sized health departments throughout the nation.

## Our Team

33 Staff  
20.4 FTEs



### Gender



### Race



### Ethnicity

