

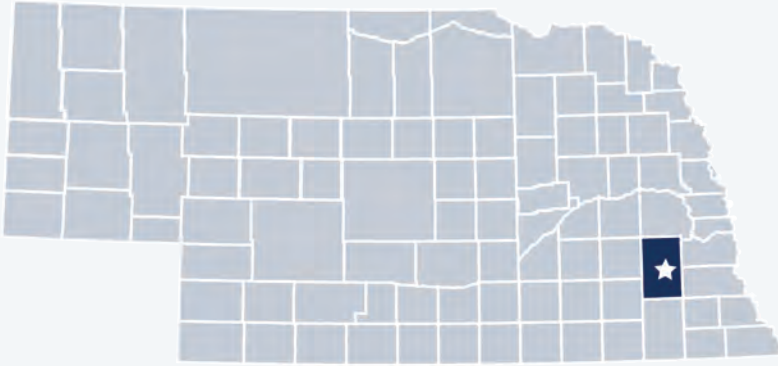
Lincoln-Lancaster County Health Department

2019 Profile







Contact:
Shavonna Lausterer, Director
SLausterer@lincoln.ne.gov
 (402) 441-8011
www.lincoln.ne.gov

Lincoln-Lancaster County Health Department is locally governed and serves all **314,358** residents in **Lancaster** County.

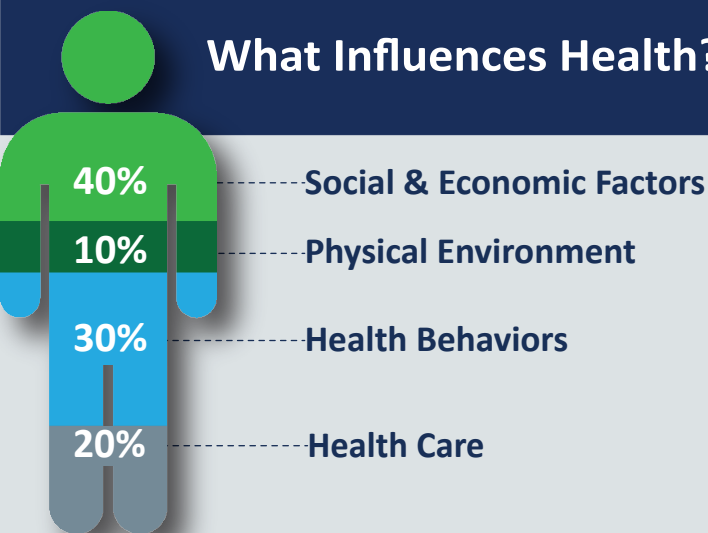


Our Priorities

Public health priority areas included in our current Community Health Improvement Plan (CHIP):

-  **Access to Care**
-  **Behavioral / Mental Health**
-  **Chronic Disease**
-  **Injury Prevention**

What Influences Health?



80% of what influences health and wellbeing occurs outside of the clinical care setting—in homes, workplaces, schools, and communities.

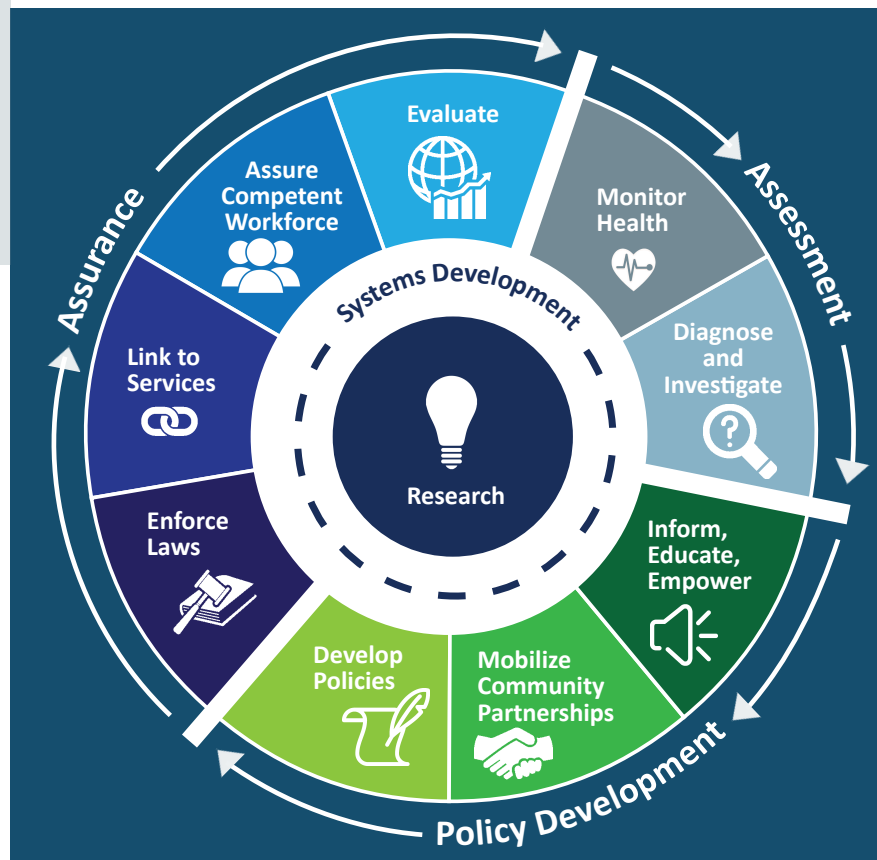
Local health departments (LHDs) are **Chief Health Strategists**—partnering across sectors to promote safety, prevention, and wellness to address that 80%.

Core Functions & 10 Essential Services of Public Health

ASSESSMENT: Collect and analyze information about health problems in Nebraska Communities.

POLICY DEVELOPMENT: Work with partners to apply data, educate the public, and develop programs and policies—all to address and prevent illness, disease, and disability.

ASSURANCE: Promote effective coordination and use of community resources to protect the health and wellbeing of Nebraskans.





LLCHD employs 161 full & part-time staff.

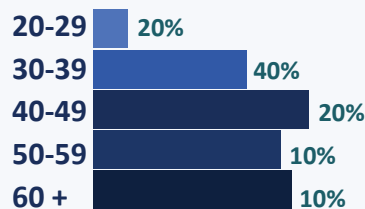
Our Team

LLCHD Staff Gender

70% Female

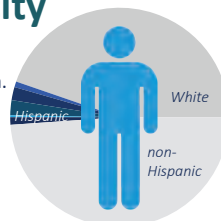
30% Male

LLCHD Staff Age

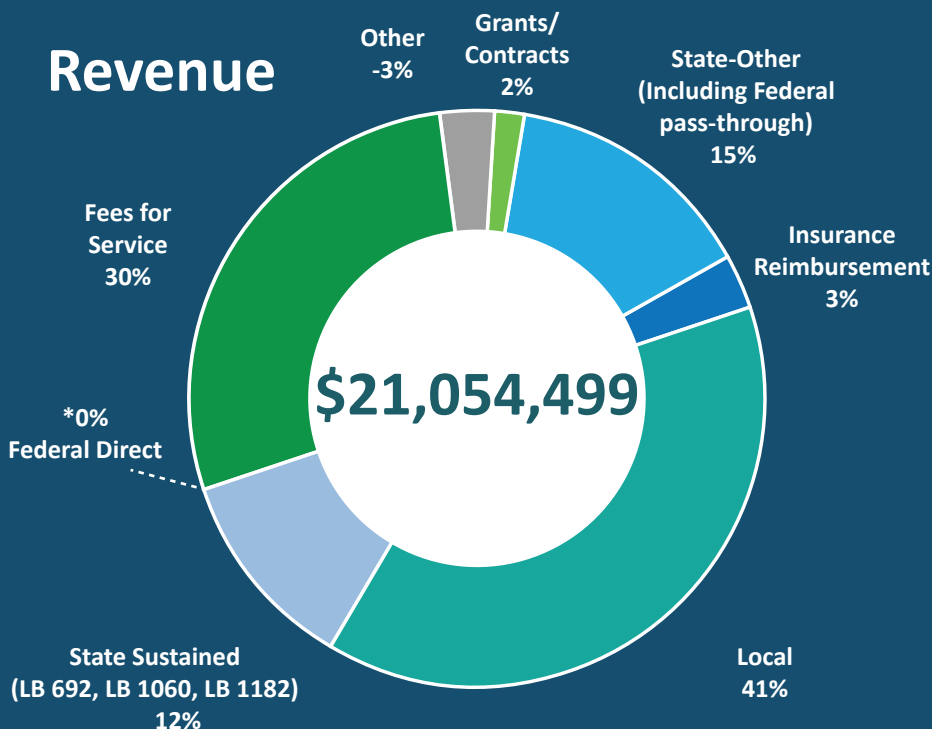


LLCHD Staff Race/Ethnicity

89% are White.
4% are African American.
1% are American Indian.
4% are Asian.
2% are more than race.
2% are Hispanic.
(98% are non-Hispanic.)



Revenue

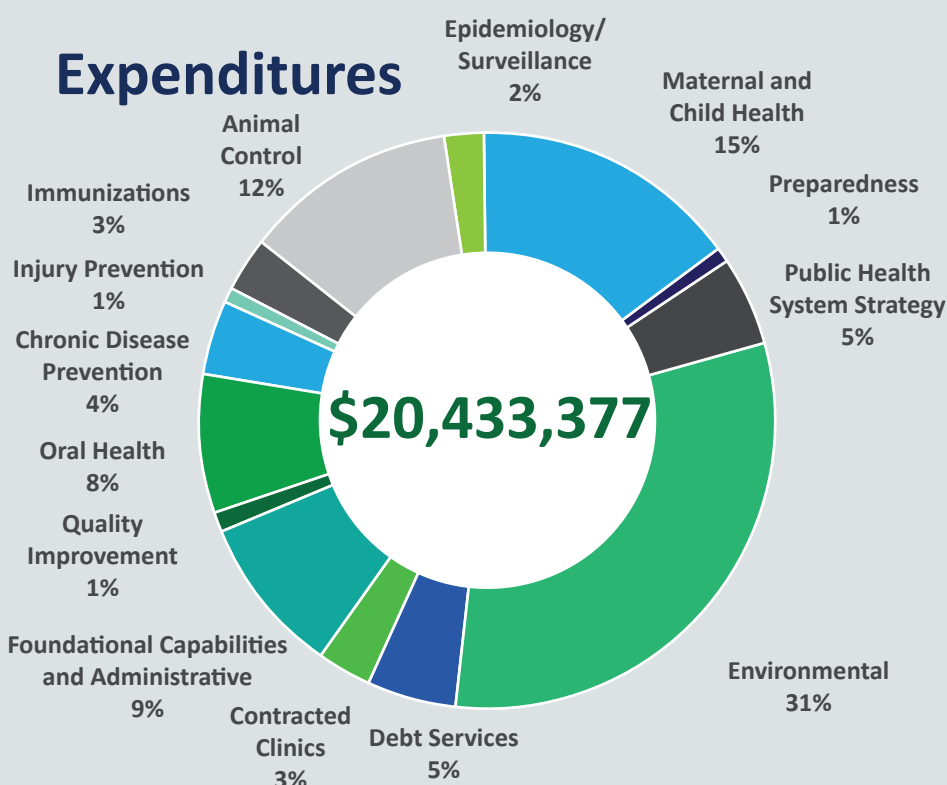


15% of LLCHD's FY 2018 revenue included federal dollars passed through from the state.

Dollars going to LHDs keep health care systems & communities strong.

12% of LLCHD's FY 2018 revenue came from the Nebraska Health Care Cash Fund and General Fund.

Expenditures



Per Capita Expenditures

\$39



\$65



Every **\$1** invested in prevention saves **\$5.60** in health care costs!

Worth the investment.