

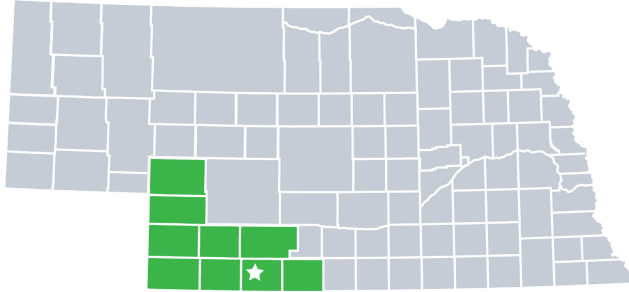
Southwest Nebraska Public Health Department

2022 Profile




Contact:
 Myra Stoney, Director
 (308) 345-4223
 director@swhealth.ne.gov
 www.swhealth.ne.gov

Southwest Nebraska Public Health Department is locally governed and serves all **38,069** residents in **Chase, Dundy, Frontier, Furnas, Hayes, Hitchcock, Keith, Perkins,** and **Red Willow** Counties.



Our Priorities

Public health priority areas included in our current Community Health Improvement Plan (CHIP):

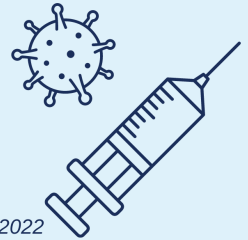
-  Cancer
-  Heart Disease

COVID-19 Local Progress

Over the last two years, health departments have been the frontlines of the COVID-19 response.

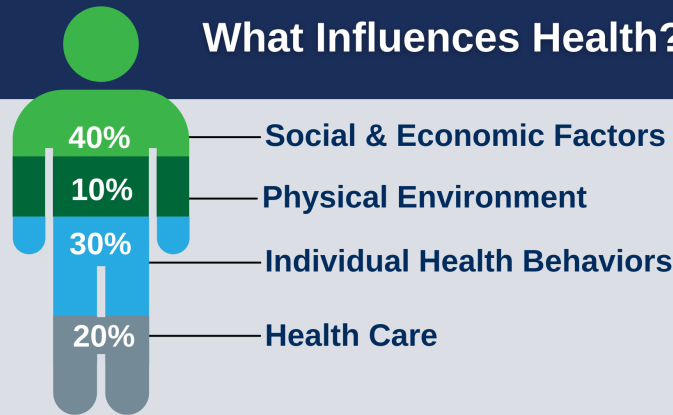
Vaccinated & Boosted as of March 2022

- 21.1%** Southwest Nebraska
- 30.7%** Nebraska
- 29.2%** National



Source: Centers for Disease Control COVID Data Tracker, as of March 25, 2022

What Influences Health?



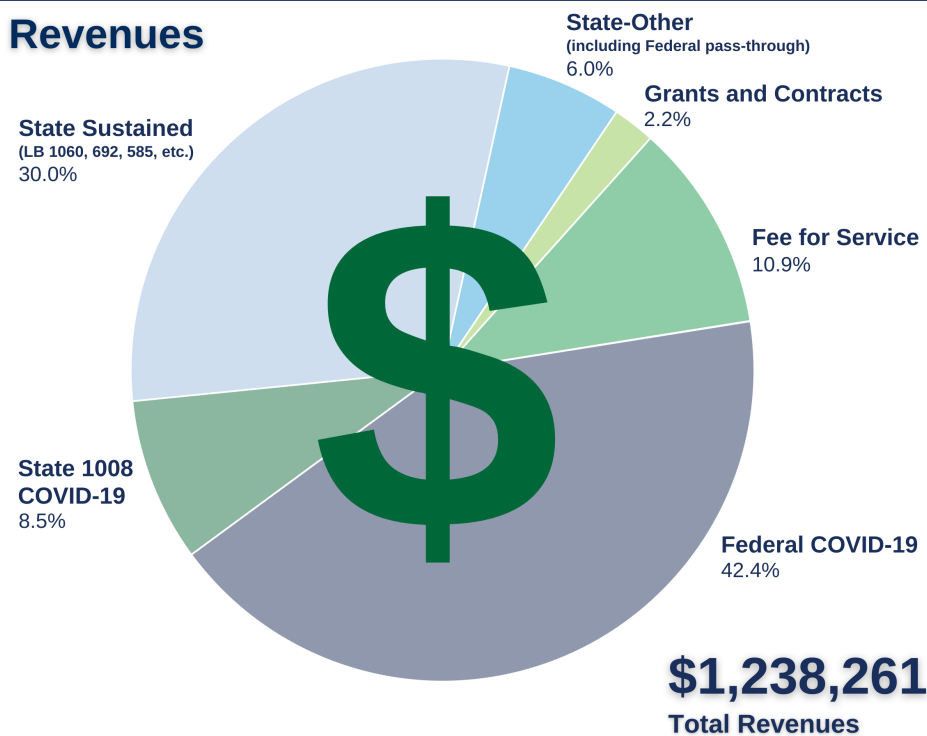
80% of what influences health and wellbeing occurs outside of the clinical care setting - in homes, workplaces, schools, and communities.

Local health departments (LHDs) are Chief Health Strategists - partnering across sectors to promote safety, prevention, and wellness to address that 80%.

Core Functions & 10 Essential Services of Public Health



Revenues



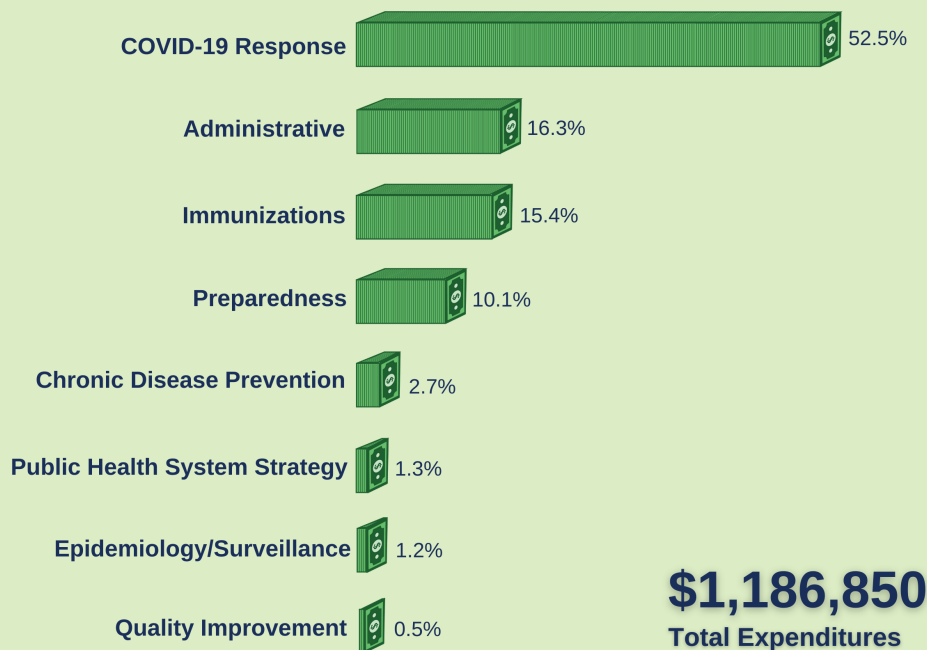
Worth the investment.

Every **\$1** invested in prevention **saves \$5.60** in health care costs!

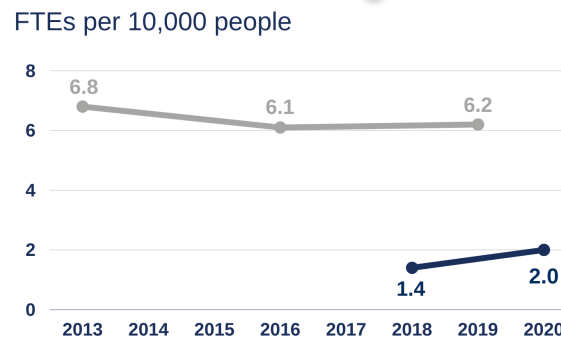
Per Capita Expenditures



Expenditures



Workforce Shortages



Southwest Nebraska

National (among LHDs serving less than 50,000 people)

Source for national data: NACCHO - National Profile of Local Health Departments, 2019

Southwest Nebraska Public Health Department has had **fewer staff per capita** than similar-sized health departments throughout the nation.

Our Team

16 Staff
15 FTEs



Gender



Race



Ethnicity

