

# South Heartland District Health Department

2022 Profile

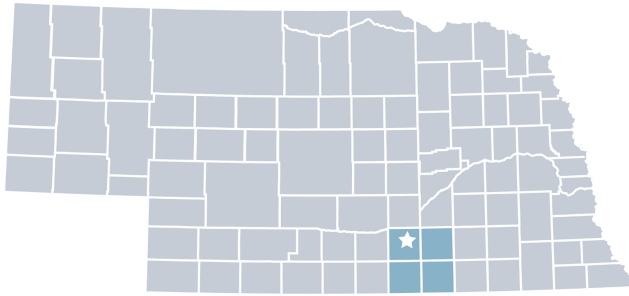
SOUTH HEARTLAND DISTRICT



HEALTH DEPARTMENT

Contact:  
 Michele Bever, PhD, Director  
 (402) 462-6211  
[michele.bever@shdhd.org](mailto:michele.bever@shdhd.org)  
[www.southheartlandhealth.org](http://www.southheartlandhealth.org)

South Heartland Health Department is locally governed and serves all **44,799** residents in **Adams, Clay, Nuckolls,** and **Webster** Counties.



## Our Priorities

Public health priority areas included in our current Community Health Improvement Plan (CHIP):

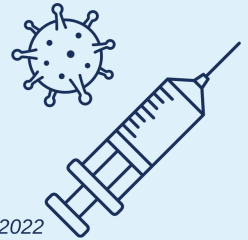
- Access to Healthcare
- Mental Health
- Substance Misuse
- Obesity
- Cancer

## COVID-19 Local Progress

## Vaccinated & Boosted as of March 2022

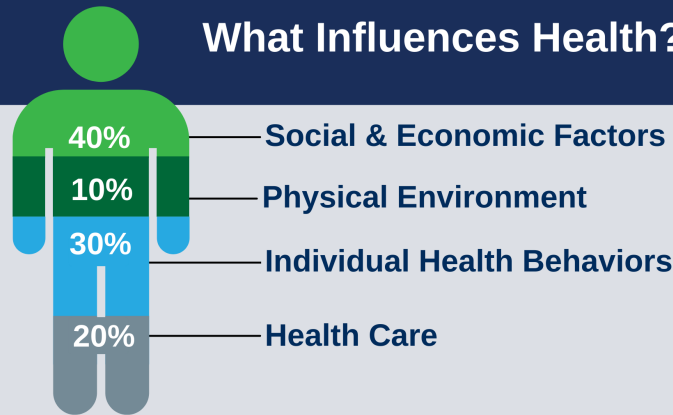
Over the last two years, health departments have been the frontlines of the COVID-19 response.

**26.0%** South Heartland  
 30.7% Nebraska  
 29.2% National



Source: Centers for Disease Control COVID Data Tracker, as of March 25, 2022

## What Influences Health?



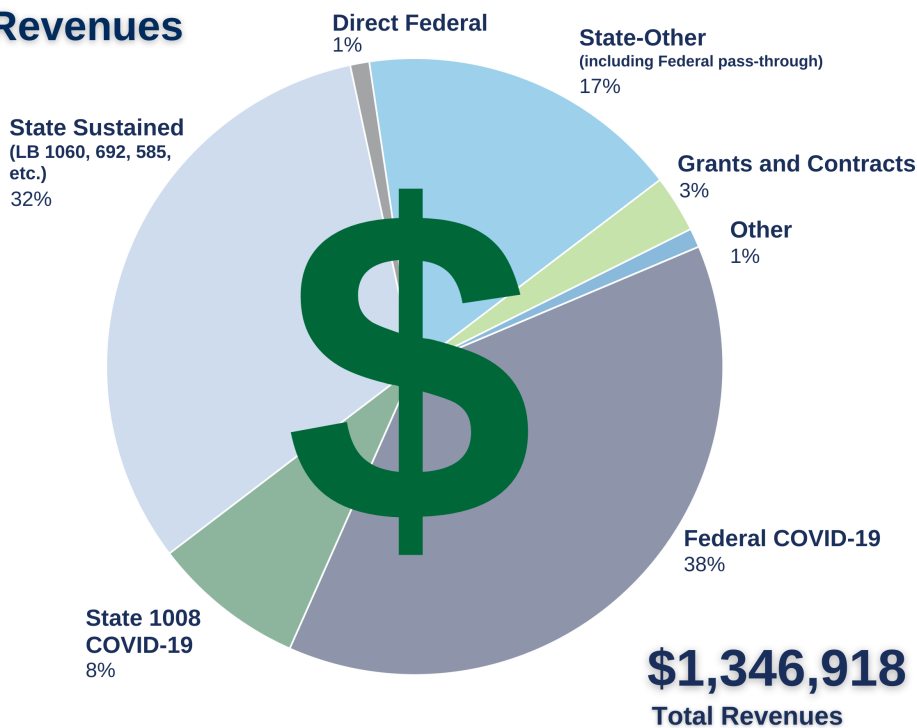
**80%** of what influences health and wellbeing occurs outside of the clinical care setting - in homes, workplaces, schools, and communities.

Local health departments (LHDs) are Chief Health Strategists - partnering across sectors to promote safety, prevention, and wellness to address that 80%.

## Core Functions & 10 Essential Services of Public Health



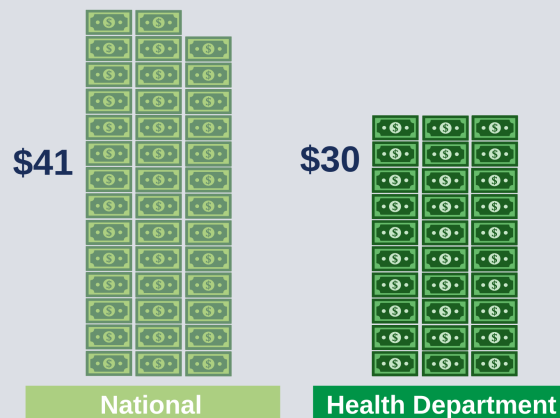
## Revenues



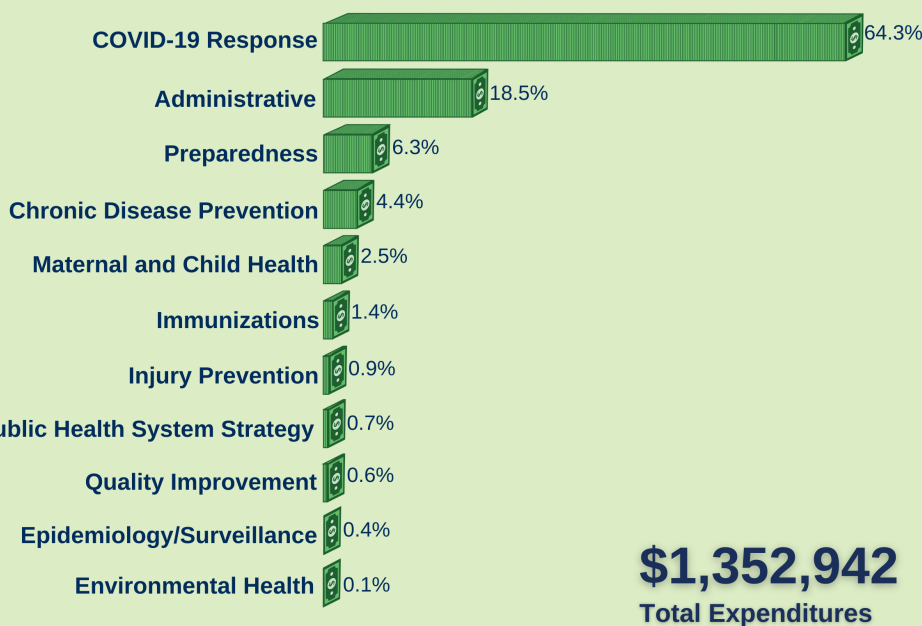
## Worth the investment.

Every **\$1** invested in prevention **saves \$5.60** in health care costs!

### Per Capita Expenditures

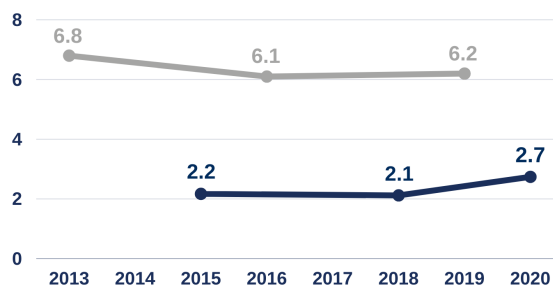


## Expenditures



## Workforce Shortages

FTEs per 10,000 people



**South Heartland**  
**National**  
 (among LHDs serving less than 50,000 people)  
 Source for national data: NACCHO - National Profile of Local Health Departments, 2019

South Heartland District Health Department has had **fewer staff per capita** than similar-sized health departments throughout the nation.

## Our Team

20 Staff  
14 FTEs



### Gender



### Race



### Ethnicity

