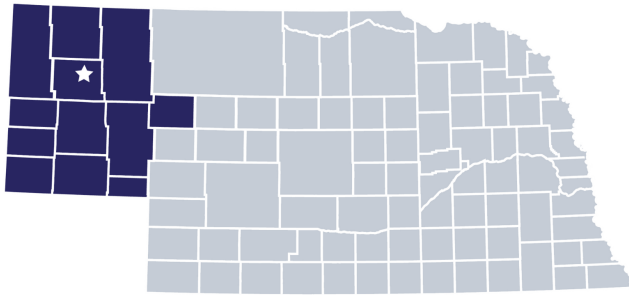


Panhandle Public Health District is locally governed and serves all **83,841** residents in **Banner, Box Butte, Cheyenne, Dawes, Deuel, Garden, Grant, Kimball, Morrill, Scotts Bluff, Sheridan,** and **Sioux** Counties.



### Our Priorities

Public health priority areas included in our current Community Health Improvement Plan (CHIP):

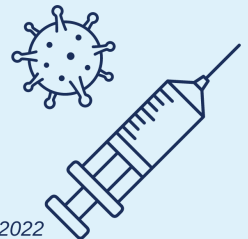
- Behavioral health
- Housing and homelessness
- Chronic disease prevention
- Early childhood care and education

### COVID-19 Local Progress

### Vaccinated & Boosted as of March 2022

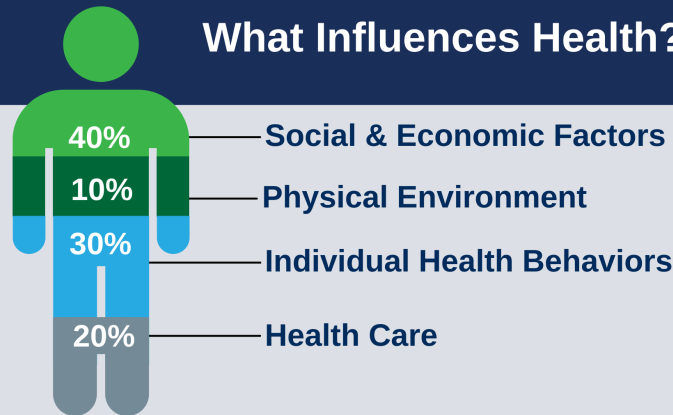
Over the last two years, health departments have been the frontlines of the COVID-19 response.

- 20.4%** Panhandle
- 30.7%** Nebraska
- 29.2%** National



Source: Centers for Disease Control COVID Data Tracker, as of March 25, 2022

### What Influences Health?



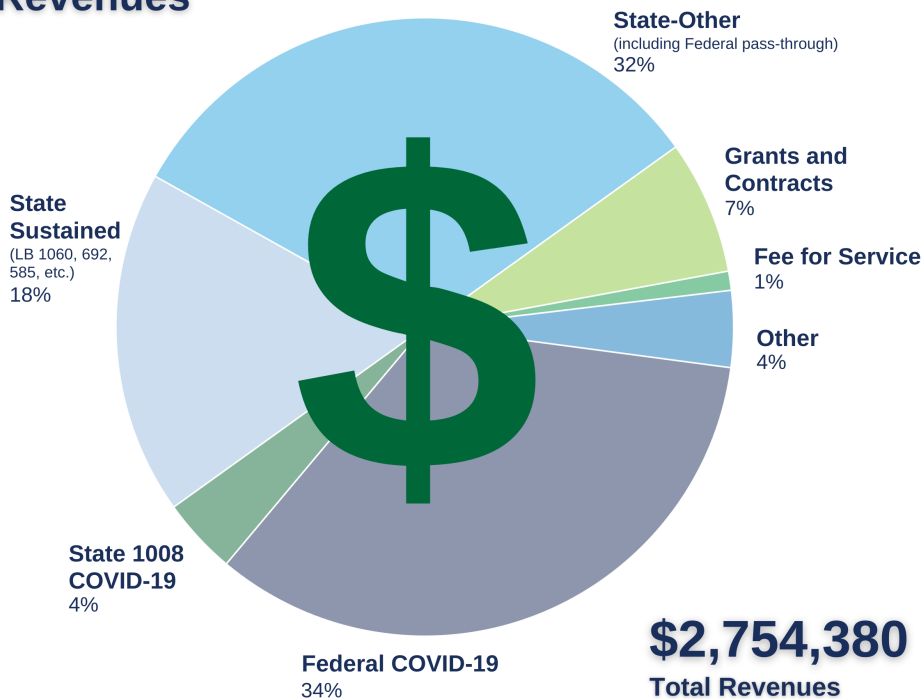
**80%** of what influences health and wellbeing occurs outside of the clinical care setting - in homes, workplaces, schools, and communities.

Local health departments (LHDs) are Chief Health Strategists - partnering across sectors to promote safety, prevention, and wellness to address that 80%.

### Core Functions & 10 Essential Services of Public Health



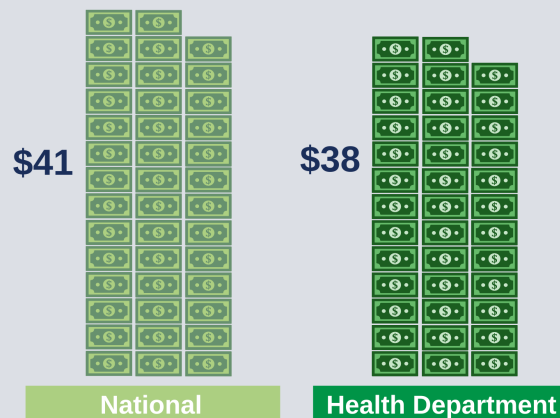
## Revenues



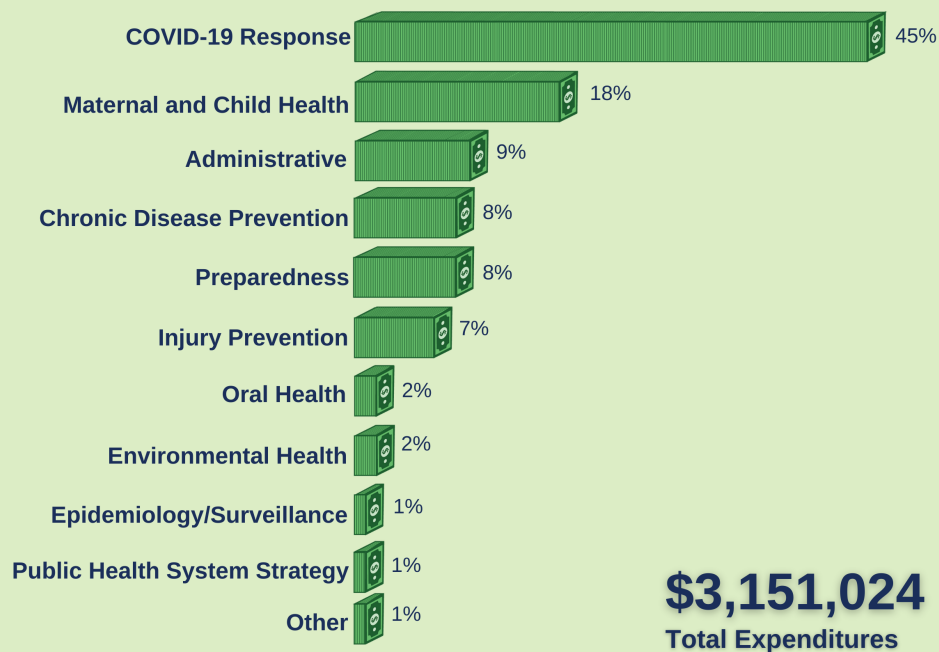
## Worth the investment.

Every **\$1** invested in prevention **saves \$5.60** in health care costs!

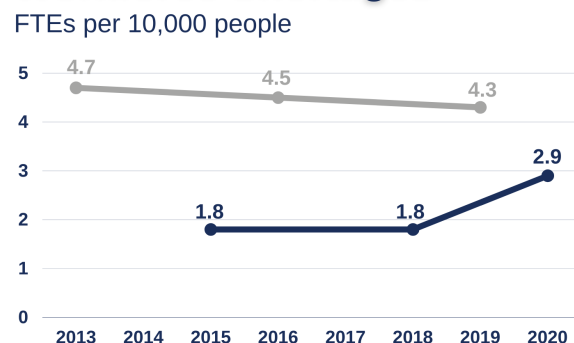
### Per Capita Expenditures



## Expenditures



## Workforce Shortages



**Panhandle**  
**National**  
 (among LHDs serving 50,000 to 499,000 people)  
 Source for national data: NACCHO - National Profile of Local Health Departments, 2019

Panhandle Public Health District has had **fewer staff per capita** than similar-sized health departments throughout the nation.

## Our Team

