

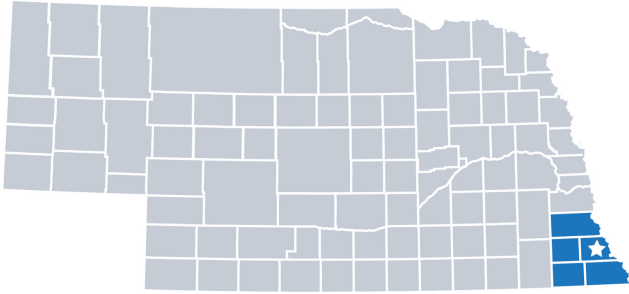
# Southeast District Health Department

2022 Profile




Contact:  
 Grant Brueggemann, Director  
 (402) 274-3993  
[grant@sedhd.org](mailto:grant@sedhd.org)  
[www.sedhd.org](http://www.sedhd.org)

Southeast District Health Department is locally governed and serves all **38,691** residents in **Johnson, Nemaha, Otoe, Pawnee,** and **Richardson** Counties.



## Our Priorities

Public health priority areas included in our current Community Health Improvement Plan (CHIP):

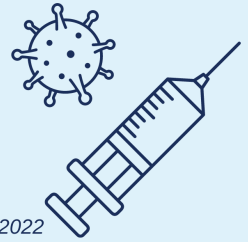
-  Behavioral/Mental Health
-  Preventative Care and Screening
-  Social Determinants of Health

## COVID-19 Local Progress

## Vaccinated & Boosted as of March 2022

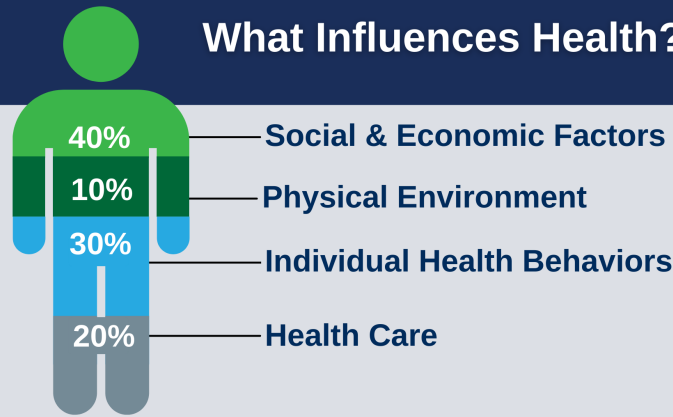
Over the last two years, health departments have been the frontlines of the COVID-19 response.

**29.8%** Southeast  
**30.7%** Nebraska  
**29.2%** National



Source: Centers for Disease Control COVID Data Tracker, as of March 25, 2022

## What Influences Health?



**80%** of what influences health and wellbeing occurs outside of the clinical care setting - in homes, workplaces, schools, and communities.

Local health departments (LHDs) are Chief Health Strategists - partnering across sectors to promote safety, prevention, and wellness to address that 80%.

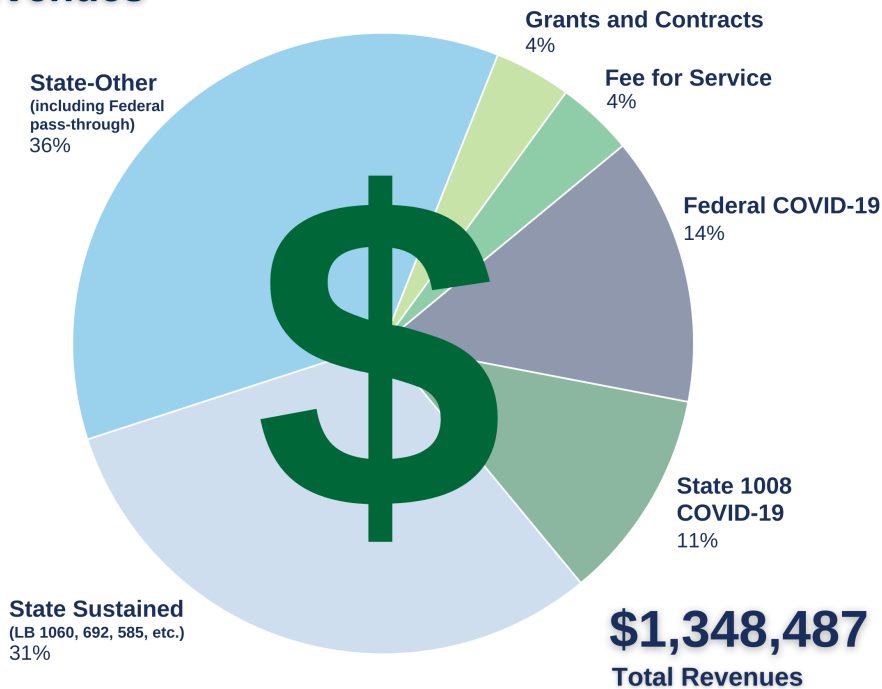
## Core Functions & 10 Essential Services of Public Health



This profile was developed by the Nebraska Association of Local Health Directors. Local and state level data were retrieved from a survey sent out in **December of 2021** and completed by 19 NALHD member health departments. Population data were taken from 2020 Census Data from the United States Census Bureau. For more information go to [www.nalhd.org](http://www.nalhd.org).



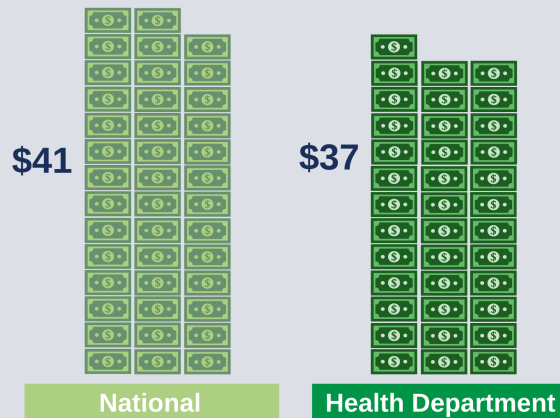
## Revenues



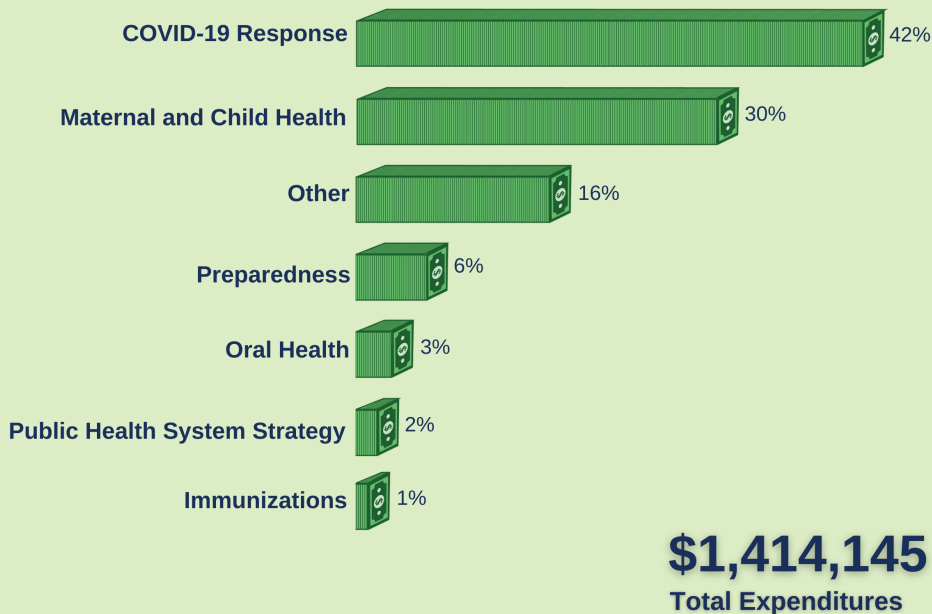
## Worth the investment.

Every **\$1** invested in prevention **saves \$5.60** in health care costs!

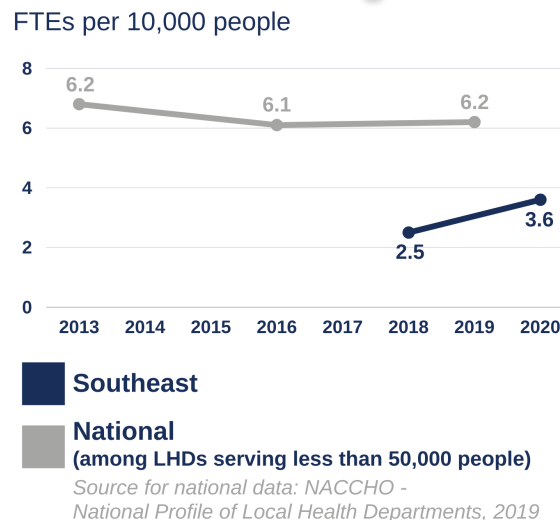
### Per Capita Expenditures



## Expenditures



## Workforce Shortages



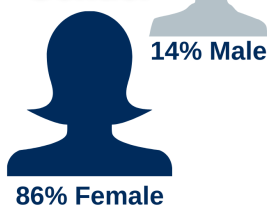
Southeast District Health Department has had **fewer staff per capita** than similar-sized health departments throughout the nation.

## Our Team

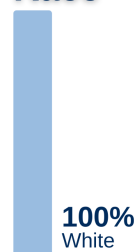
14 Staff  
14 FTEs



### Gender



### Race



### Ethnicity

