

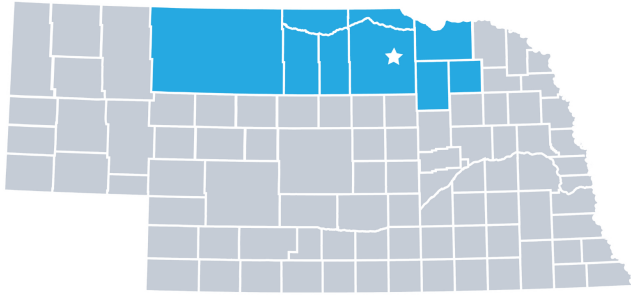
North Central District Health Department

2022 Profile





Contact:
 Roger Wiese, Director
 (402) 336-2406
 roger@ncdhd.ne.gov
 www.ncdhd.ne.gov

North Central District Health Department is locally governed and serves all 44,329 residents in **Antelope, Boyd, Brown, Cherry, Holt, Keya Paha, Knox, Pierce,** and **Rock** Counties.



Our Priorities

Public health priority areas included in our current Community Health Improvement Plan (CHIP):

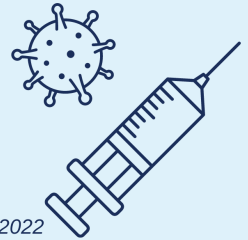
-  Chronic disease detection & management
-  Mental wellness

COVID-19 Local Progress

Over the last two years, health departments have been the frontlines of the COVID-19 response.

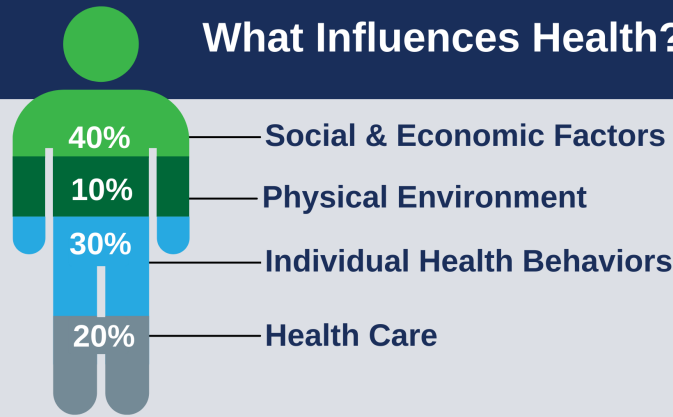
Vaccinated & Boosted as of March 2022

- 21.5% North Central
- 30.7% Nebraska
- 29.2% National



Source: Centers for Disease Control COVID Data Tracker, as of March 25, 2022

What Influences Health?



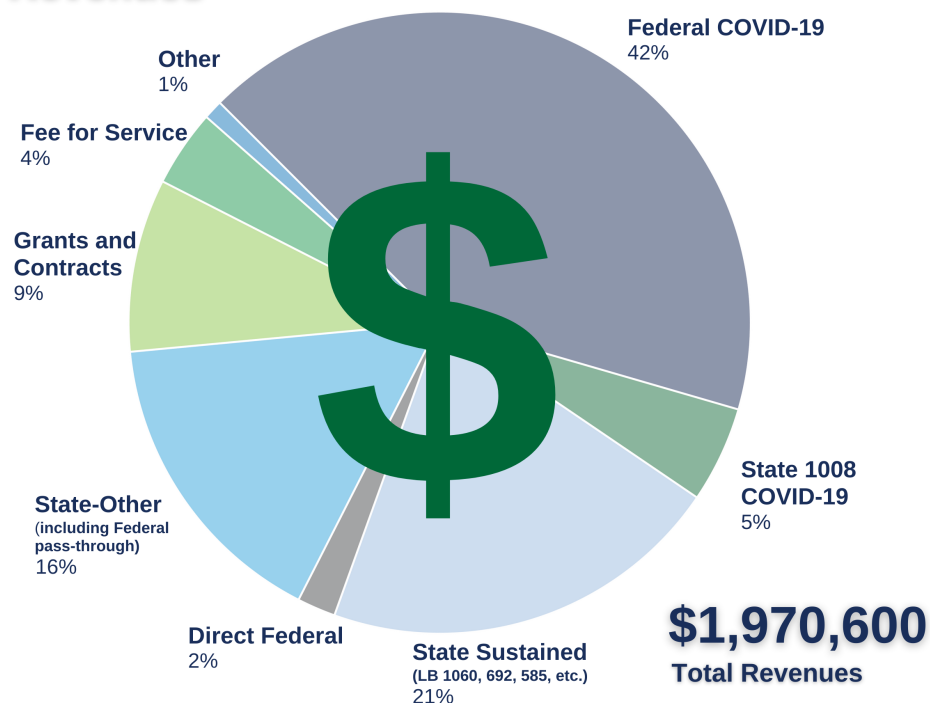
80% of what influences health and wellbeing occurs outside of the clinical care setting - in homes, workplaces, schools, and communities.

Local health departments (LHDs) are Chief Health Strategists - partnering across sectors to promote safety, prevention, and wellness to address that 80%.

Core Functions & 10 Essential Services of Public Health



Revenues



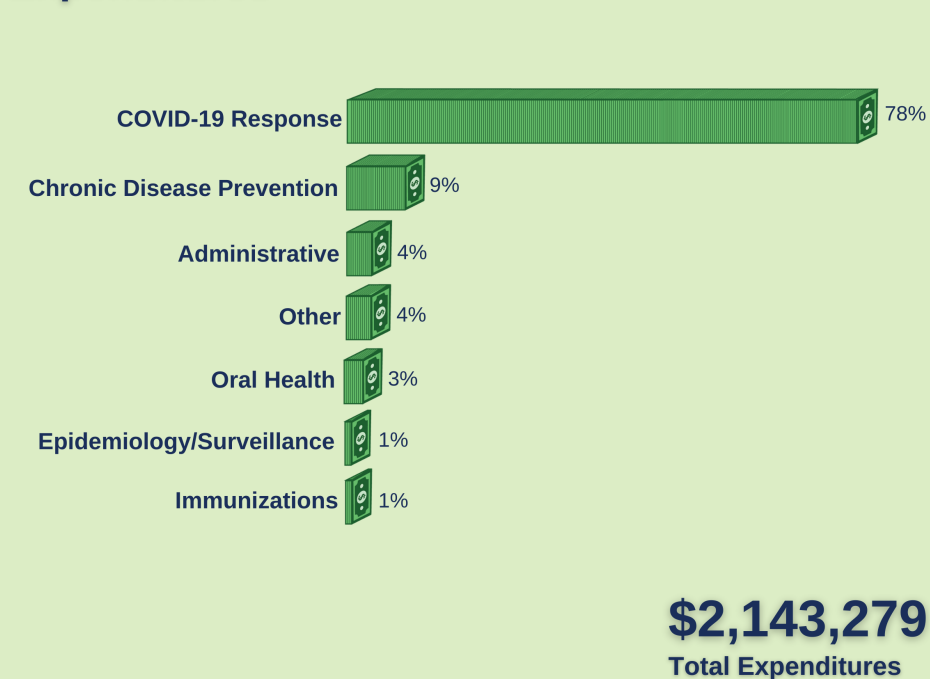
Worth the investment.

Every **\$1** invested in prevention **saves \$5.60** in health care costs!

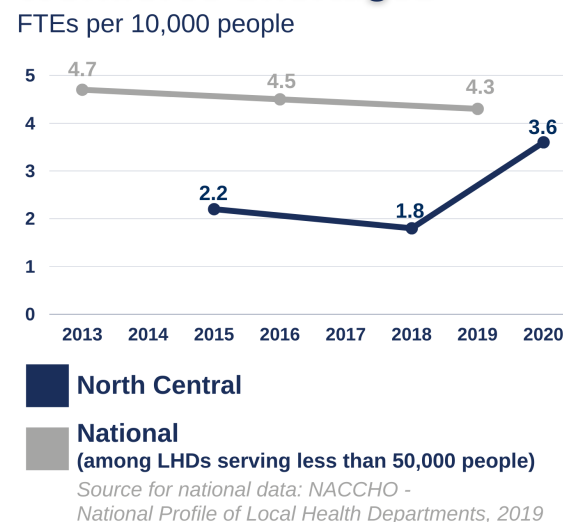
Per Capita Expenditures



Expenditures



Workforce Shortages



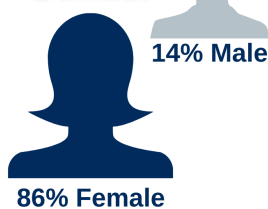
North Central District Health Department has had **fewer staff per capita** than similar-sized health departments throughout the nation.

Our Team

21 Staff
15.9 FTEs



Gender



Race



Ethnicity

