

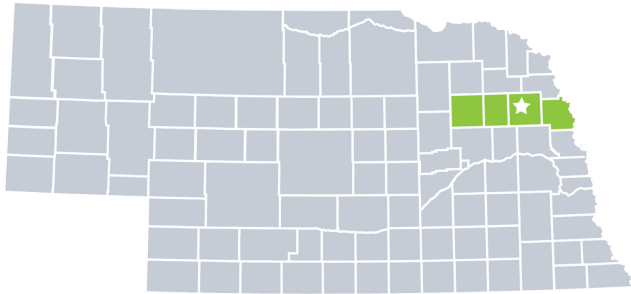
# Elkhorn Logan Valley Public Health Department

2022 Profile



Contact:  
 Gina Uhing, Director  
 (402) 529-2233  
 gina@elvphd.org  
 www.elvphd.org

Elkhorn Logan Valley Public Health Department is locally governed and serves all **57,162** residents in **Burt, Cuming, Madison,** and **Stanton** Counties.



## Our Priorities

Public health priority areas included in our current Community Health Improvement Plan (CHIP):

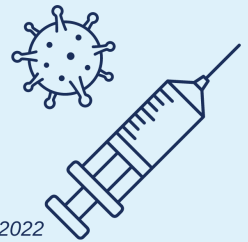
- Chronic Disease Control and Sepsis
- Behavioral and Mental Health

## COVID-19 Local Progress

Over the last two years, health departments have been the frontlines of the COVID-19 response.

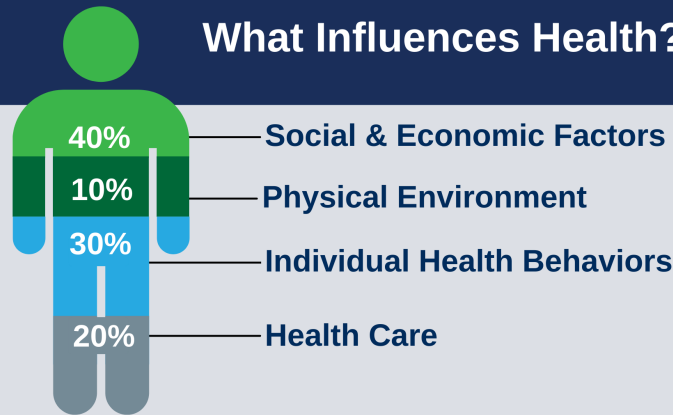
## Vaccinated & Boosted as of March 2022

- 25.4%** Elkhorn Logan Valley
- 30.7%** Nebraska
- 29.2%** National



Source: Centers for Disease Control COVID Data Tracker, as of March 25, 2022

## What Influences Health?



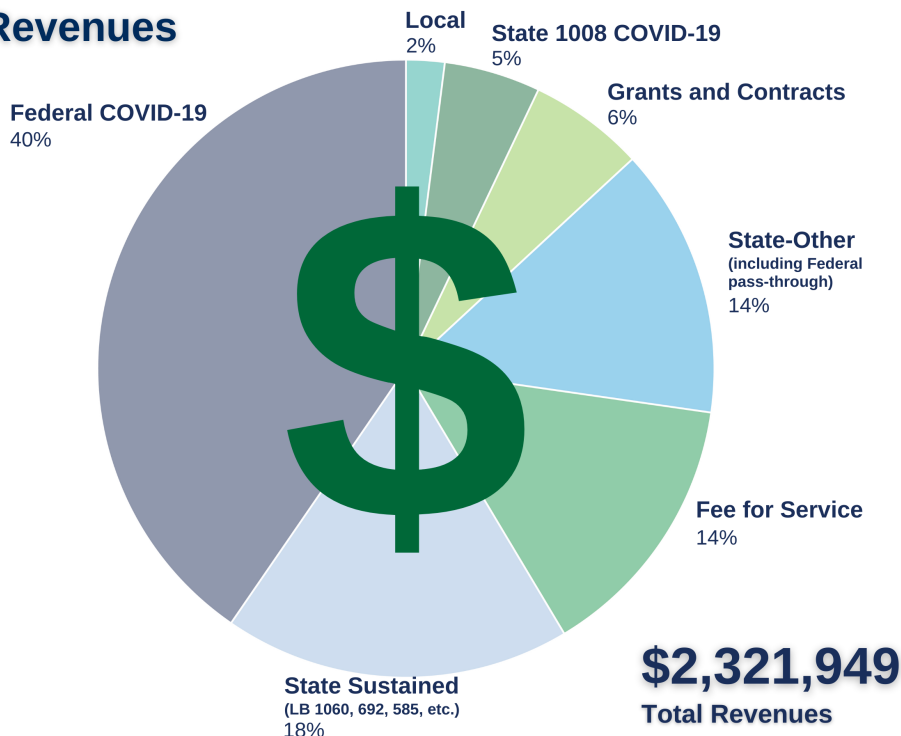
**80%** of what influences health and wellbeing occurs outside of the clinical care setting - in homes, workplaces, schools, and communities.

Local health departments (LHDs) are Chief Health Strategists - partnering across sectors to promote safety, prevention, and wellness to address that 80%.

## Core Functions & 10 Essential Services of Public Health



## Revenues



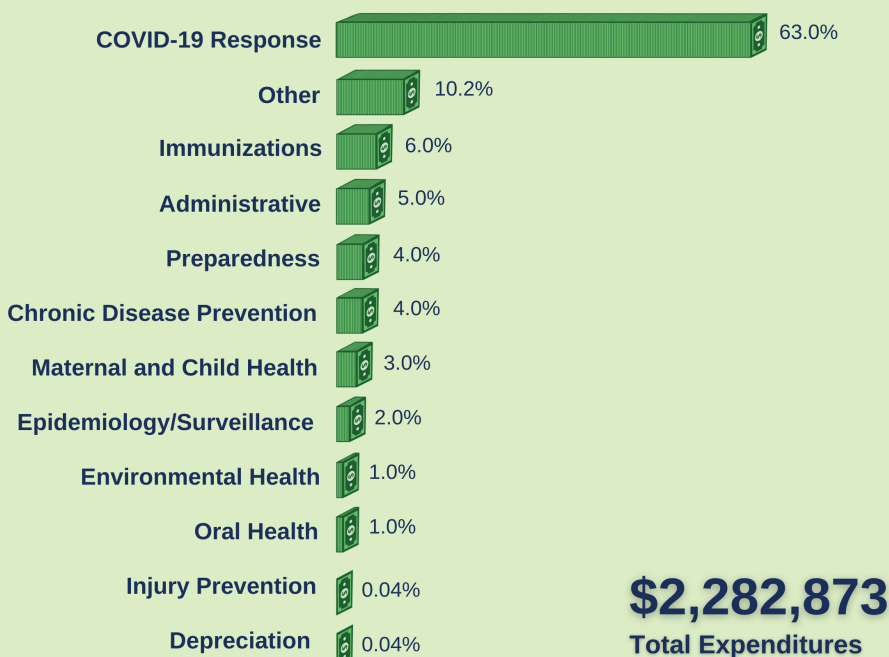
## Worth the investment.

Every **\$1** invested in prevention **saves \$5.60** in health care costs!

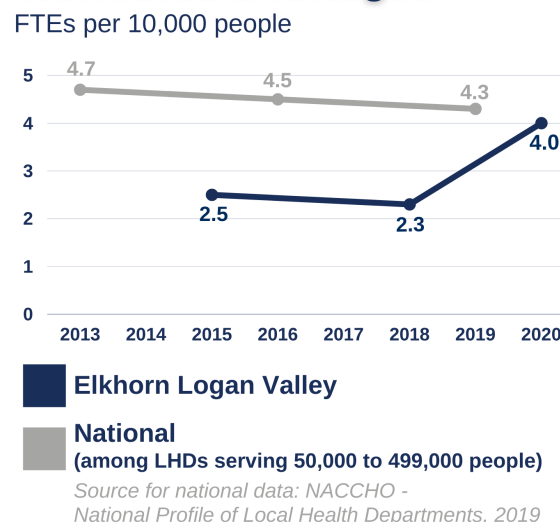
### Per Capita Expenditures



## Expenditures



## Workforce Shortages



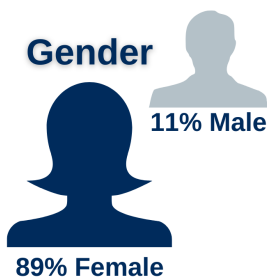
Elkhorn Logan Valley Public Health Department has had **fewer staff per capita** than similar-sized health departments throughout the nation.

## Our Team

19 Staff  
19 FTEs



### Gender



### Race



### Ethnicity

