

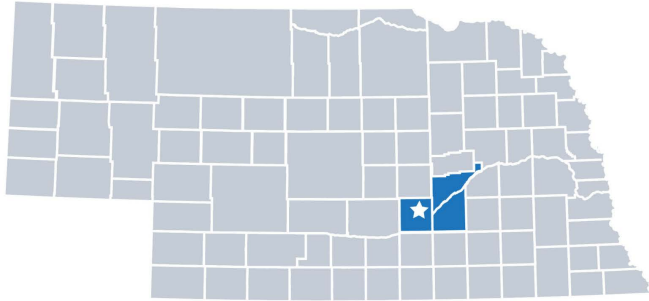
Central District Health Department

2022 Profile



Contact:
Teresa Anderson, Director
(308) 385-5175
tanderson@cdhd.ne.gov
www.cdhd.ne.gov

Central District Health Department is locally governed and serves all 79,992 residents in **Hall, Hamilton, and Merrick** Counties.



Our Priorities

Public health priority areas included in our current Community Health Improvement Plan (CHIP):

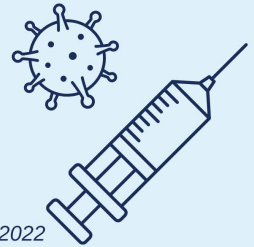
-  Access to culturally appropriate behavioral health
-  Health and healthcare
-  Affordable, quality childcare options

COVID-19 Local Progress

Vaccinated & Boosted as of March 2022

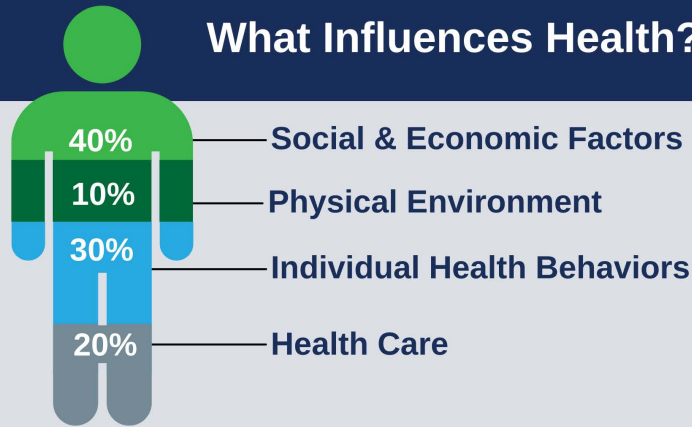
Over the last two years, health departments have been the frontlines of the COVID-19 response.

24.9% Central
30.7% Nebraska
29.2% National



Source: Centers for Disease Control COVID Data Tracker, as of March 25, 2022

What Influences Health?



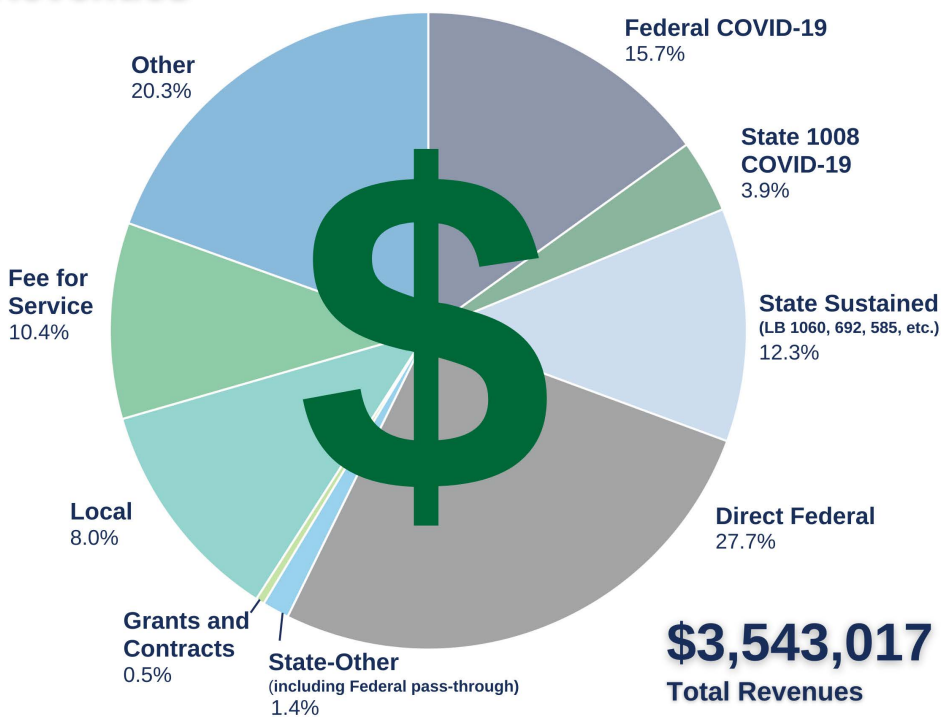
80% of what influences health and wellbeing occurs outside of the clinical care setting - in homes, workplaces, schools, and communities.

Local health departments (LHDs) are Chief Health Strategists - partnering across sectors to promote safety, prevention, and wellness to address that 80%.

Core Functions & 10 Essential Services of Public Health



Revenues



Worth the investment.

Every **\$1** invested in prevention **saves \$5.60** in health care costs!

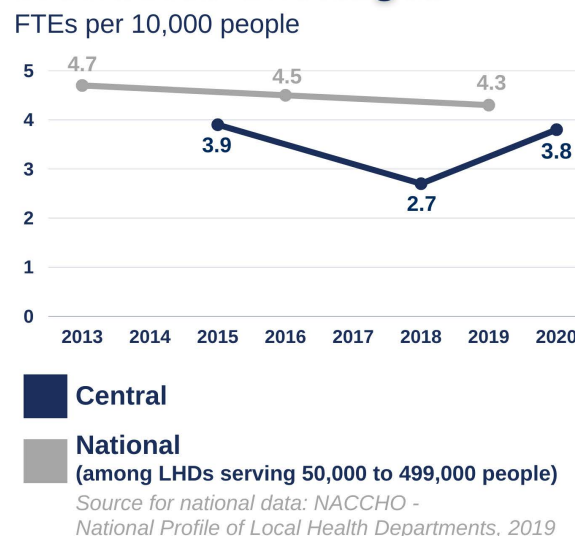
Per Capita Expenditures



Expenditures



Workforce Shortages



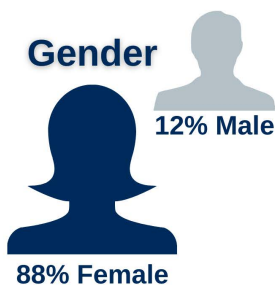
Central District Health Department has had **fewer staff per capita** than similar-sized health departments throughout the nation.

Our Team

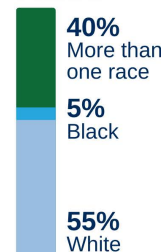
42 Staff
38 FTEs



Gender



Race



Ethnicity

