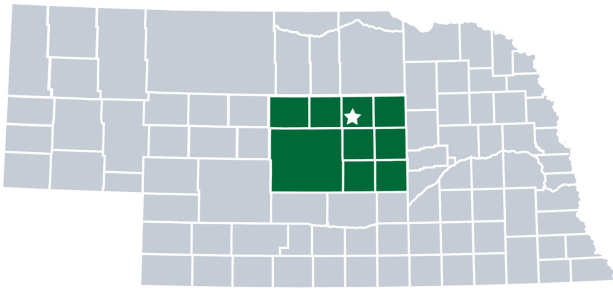




Loup Basin Public Health Department is locally governed and serves all **29,851** residents in **Blaine, Custer, Garfield, Greely, Howard, Loup, Sherman, Valley** and **Wheeler** Counties.



## Our Priorities

Public health priority areas included in our current Community Health Improvement Plan (CHIP):



**Heart Disease**



**Pediatric Oral Health**

## COVID-19 Local Progress

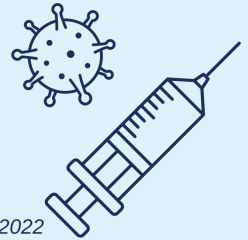
## Vaccinated & Boosted as of March 2022

Over the last two years, health departments have been the frontlines of the COVID-19 response.

**21.6% Loup Basin**

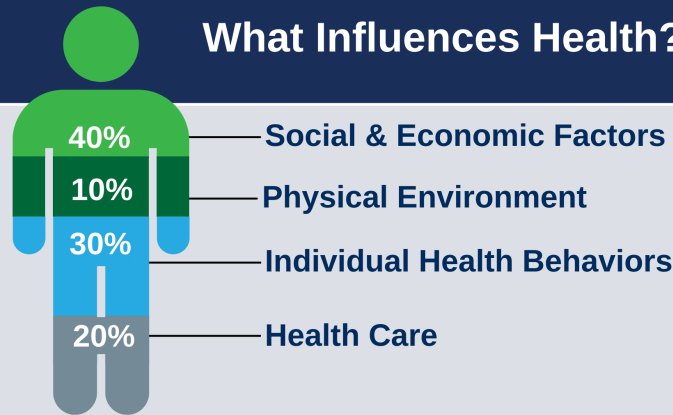
**30.7% Nebraska**

**29.2% National**



Source: Centers for Disease Control COVID Data Tracker, as of March 25, 2022

## What Influences Health?



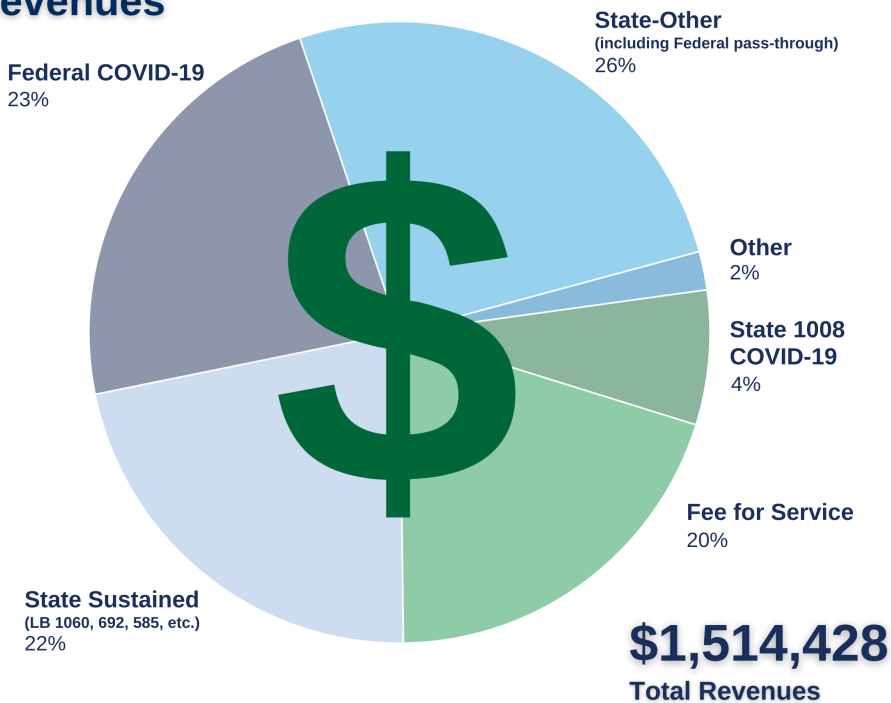
**80%** of what influences health and wellbeing occurs outside of the clinical care setting - in homes, workplaces, schools, and communities.

Local health departments (LHDs) are Chief Health Strategists - partnering across sectors to promote safety, prevention, and wellness to address that 80%.

## Core Functions & 10 Essential Services of Public Health



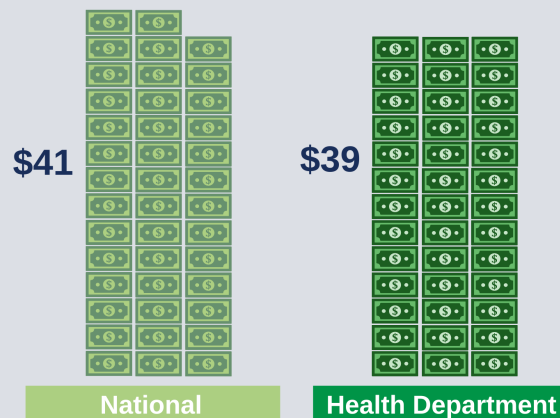
## Revenues



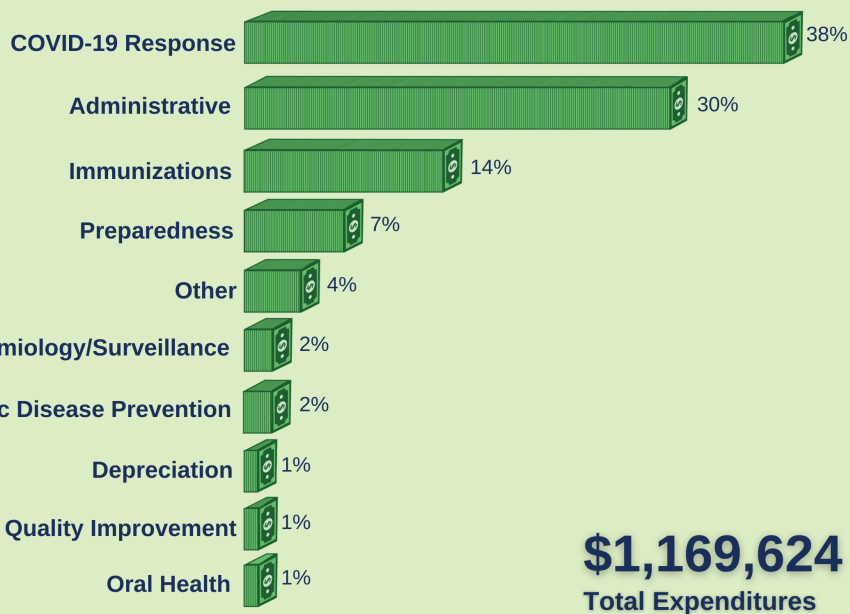
## Worth the investment.

Every **\$1** invested in prevention **saves \$5.60** in health care costs!

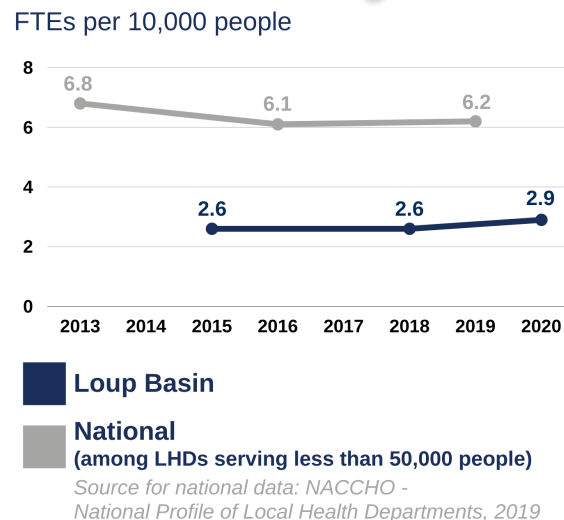
### Per Capita Expenditures



## Expenditures



## Workforce Shortages



Loup Basin Public Health Department has had **fewer staff per capita** than similar-sized health departments throughout the nation.

## Our Team

13 Staff  
12.6 FTEs



### Gender



### Race



### Ethnicity

