

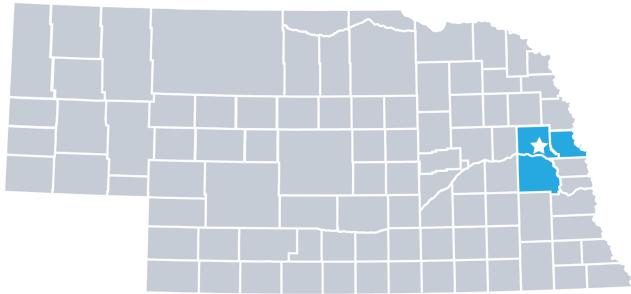
Three Rivers Public Health Department

2022 Profile



Contact:
Terra Uhing, Director
(402) 727-5396
terra@3rphd.org
www.threeriverspublichealth.org

Three Rivers Public Health Department is locally governed and serves all **80,310** residents in **Dodge, Saunders,** and **Washington** Counties.



Our Priorities

Public health priority areas included in our current Community Health Improvement Plan (CHIP):

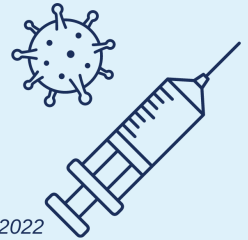
- Mental and behavioral health**
- Healthy lifestyles**
- Access to services**
- Prevention and screening**
- Addressing risky behaviors**

COVID-19 Local Progress

Over the last two years, health departments have been the frontlines of the COVID-19 response.

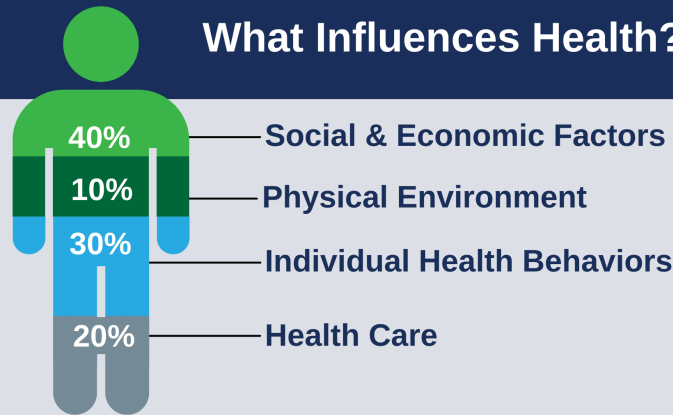
Vaccinated & Boosted as of March 2022

- 30.7% Three Rivers**
- 30.7% Nebraska**
- 29.2% National**



Source: Centers for Disease Control COVID Data Tracker, as of March 25, 2022

What Influences Health?



80% of what influences health and wellbeing occurs outside of the clinical care setting - in homes, workplaces, schools, and communities.

Local health departments (LHDs) are Chief Health Strategists - partnering across sectors to promote safety, prevention, and wellness to address that 80%.

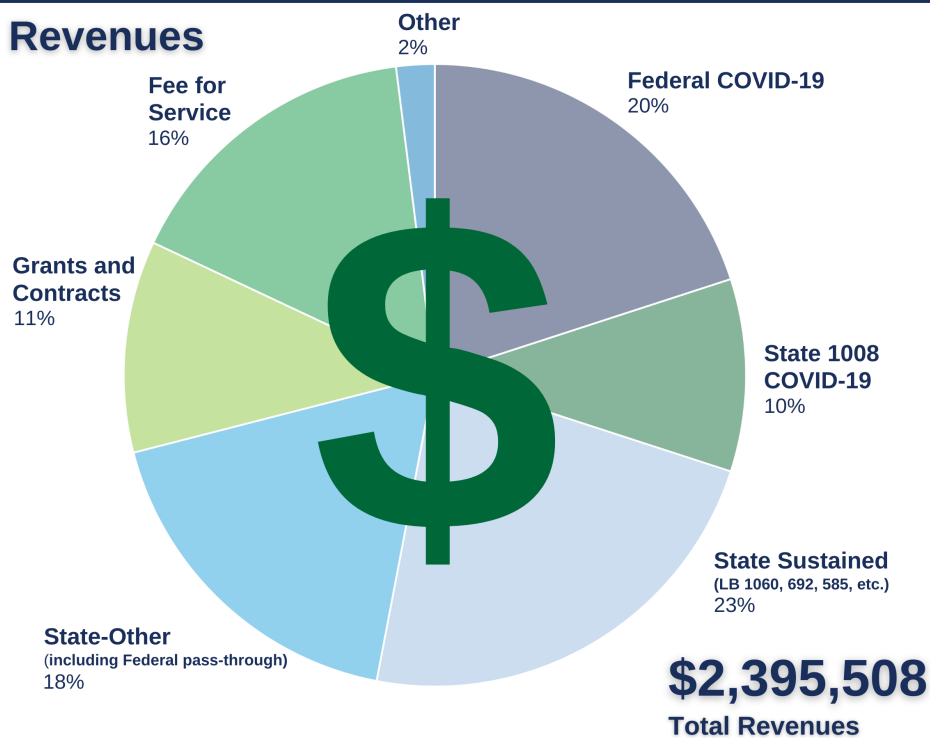
Core Functions & 10 Essential Services of Public Health



This profile was developed by the Nebraska Association of Local Health Directors. Local and state level data were retrieved from a survey sent out in **December of 2021** and completed by 19 NALHD member health departments. Population data were taken from 2020 Census Data from the United States Census Bureau. For more information go to www.nalhd.org.



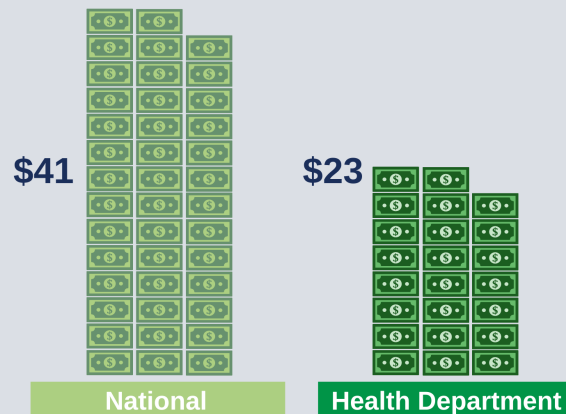
Revenues



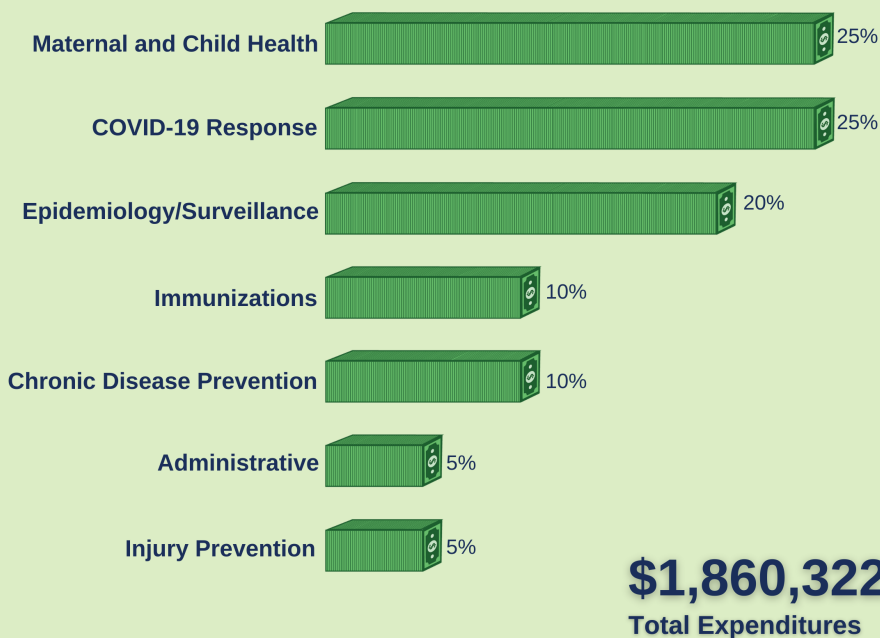
Worth the investment.

Every **\$1** invested in prevention **saves \$5.60** in health care costs!

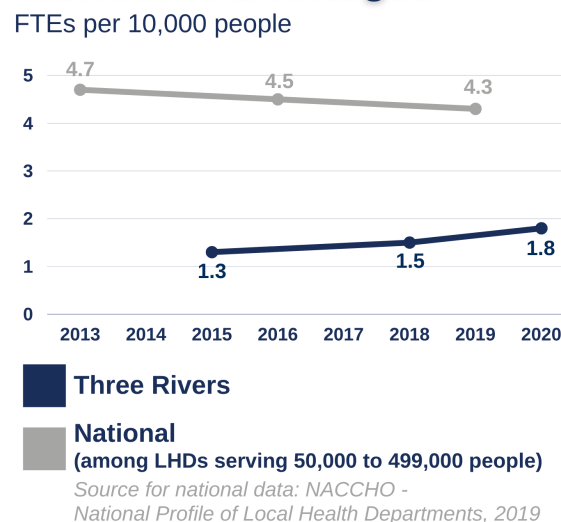
Per Capita Expenditures



Expenditures



Workforce Shortages



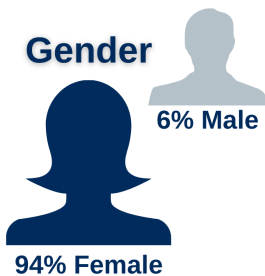
Three Rivers Public Health Department has had **fewer staff per capita** than similar-sized health departments throughout the nation.

Our Team

16 Staff
15.7 FTEs



Gender



Race



Ethnicity

