

Elkhorn Logan Valley Public Health Department

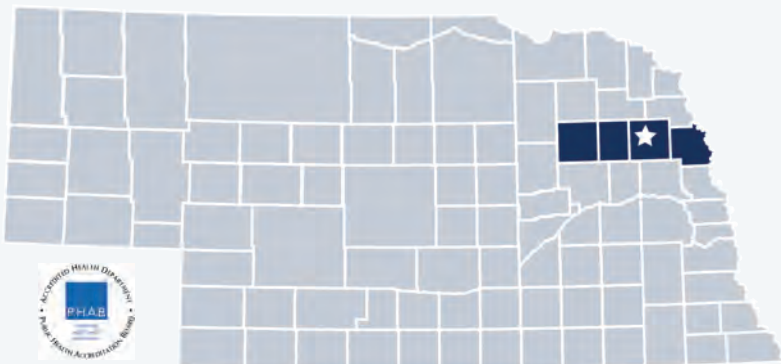
2019 Profile



Contact:

Gina Uhing, Director
gina@elvphd.org
(402) 529-2233
www.elvphd.org

Elkhorn Logan Valley Public Health Department is locally governed and serves all **56,709** residents in **Madison**, **Stanton**, **Cuming**, and **Burt** Counties.



Our Priorities

Public health priority areas included in our current Community Health Improvement Plan (CHIP):



Cancer



Obesity

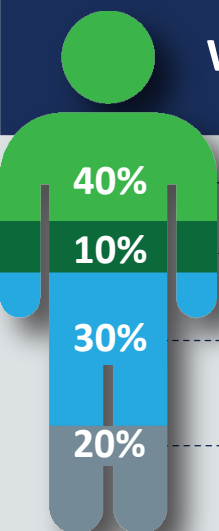


Access to Care



Motor Vehicular Safety

What Influences Health?



Social & Economic Factors

Physical Environment

Health Behaviors

Health Care

80% of what influences health and wellbeing occurs outside of the clinical care setting—in homes, workplaces, schools, and communities.

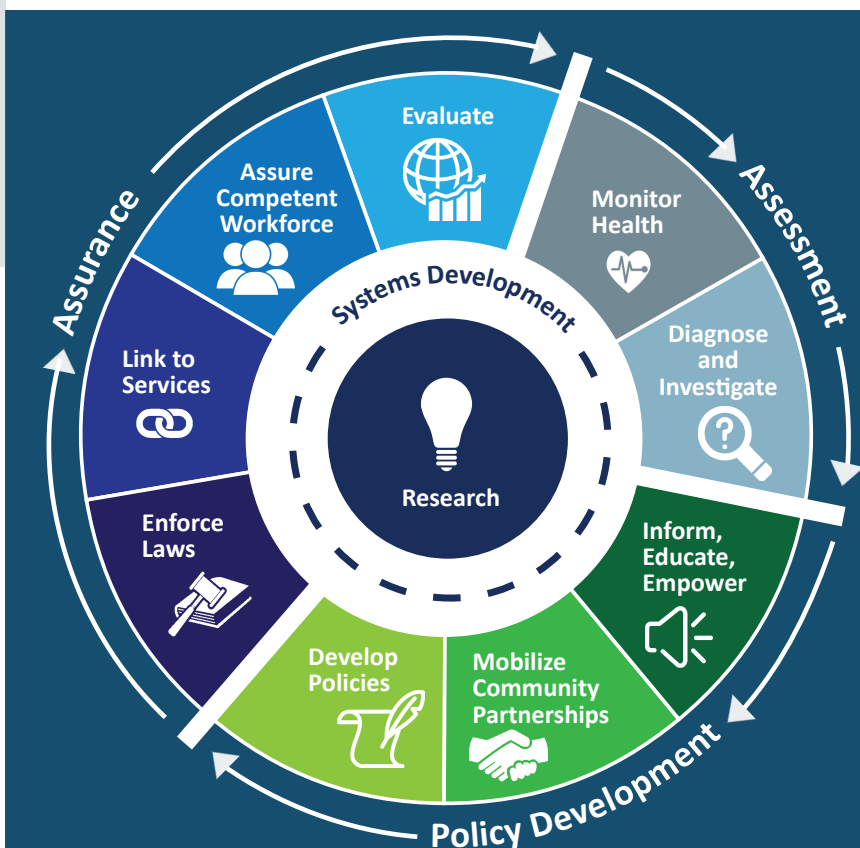
Local health departments (LHDs) are **Chief Health Strategists**—partnering across sectors to promote safety, prevention, and wellness to address that 80%.

Core Functions & 10 Essential Services of Public Health

ASSESSMENT: Collect and analyze information about health problems in Nebraska Communities.

POLICY DEVELOPMENT: Work with partners to apply data, educate the public, and develop programs and policies—all to address and prevent illness, disease, and disability.

ASSURANCE: Promote effective coordination and use of community resources to protect the health and wellbeing of Nebraskans.





ELVPHD employs 13 full & part-time staff.

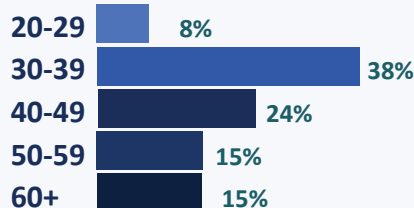
Our Team

ELVPHD Staff Gender

100% Female



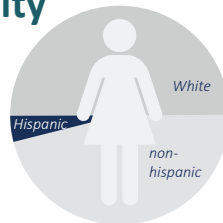
ELVPHD Staff Age



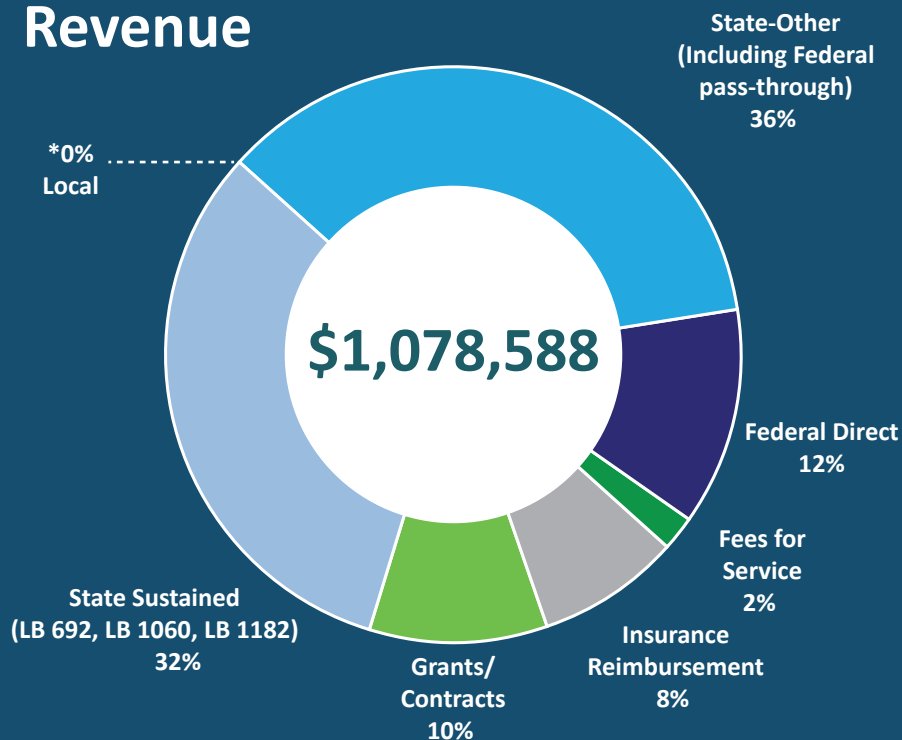
ELVPHD Staff Race/Ethnicity

100% are White.

8% are Hispanic.
(92% are non-Hispanic.)



Revenue

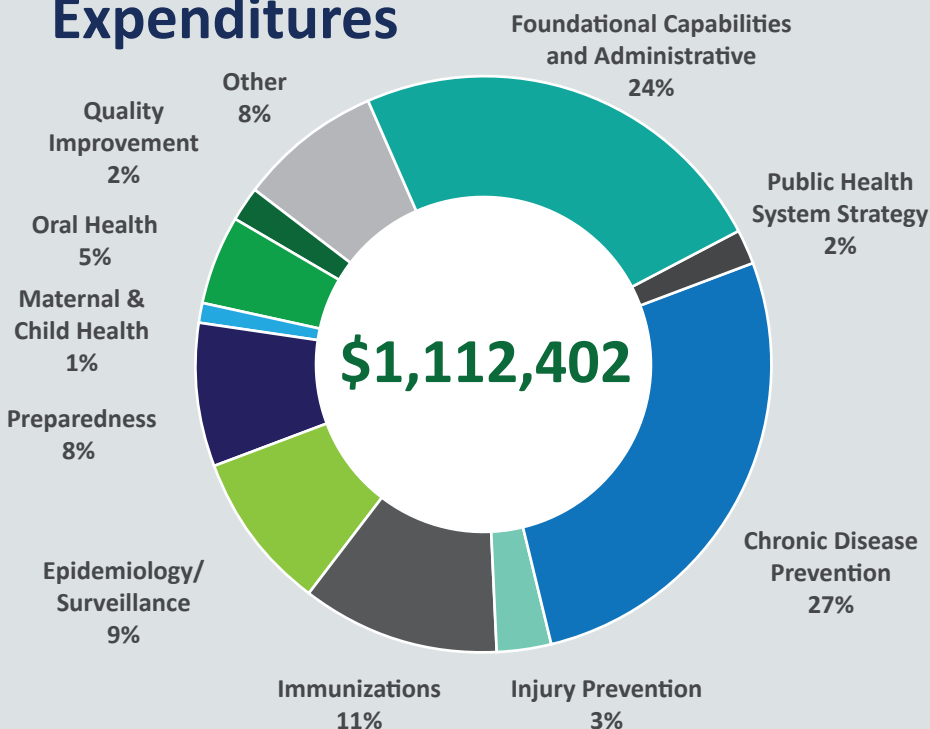


36% of ELVPHD's FY 2018 revenue included federal dollars passed through from the state.

Dollars going to LHDs keep health care systems & communities strong.

32% of ELVPHD's FY 2018 revenue came from the Nebraska Health Care Cash Fund and General Fund.

Expenditures



Per Capita Expenditures



Every **\$1** invested in prevention saves **\$5.60** in health care costs!

Worth the investment.