

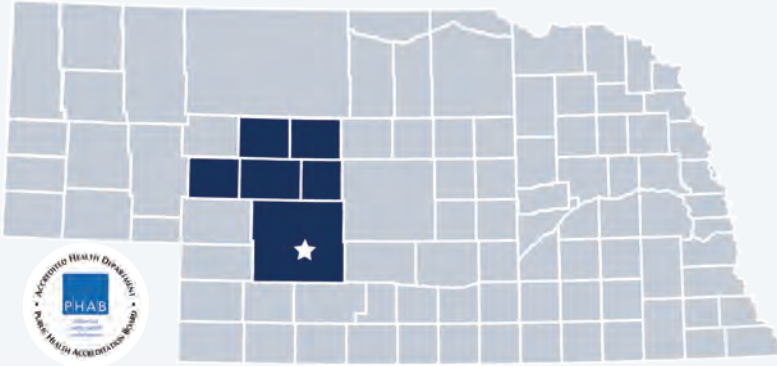
West Central District Health Department 2019 Profile



Contact:




Shannon Vanderheiden, Director
vanderheidens@wcdhd.org
(308) 696-1201
www.wcdhd.org

West Central District Health Department is locally governed and serves all **38,403** residents in **Lincoln, Logan, McPherson, Thomas, Hooker,** and **Arthur** Counties.

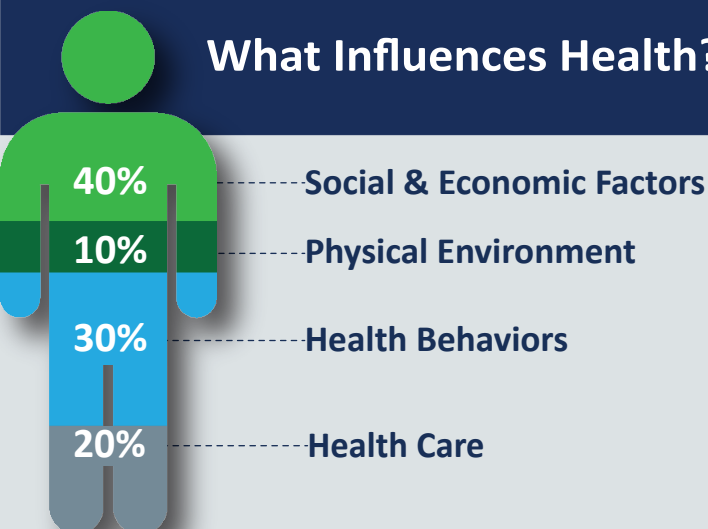


Our Priorities

Public health priority areas included in our current Community Health Improvement Plan (CHIP):

-  **Affordable and Equitable Access to Care and Services**
-  **Healthy Lifestyles/Wellbeing**
-  **Community Collaboration**

What Influences Health?



80% of what influences health and wellbeing occurs outside of the clinical care setting—in homes, workplaces, schools, and communities.

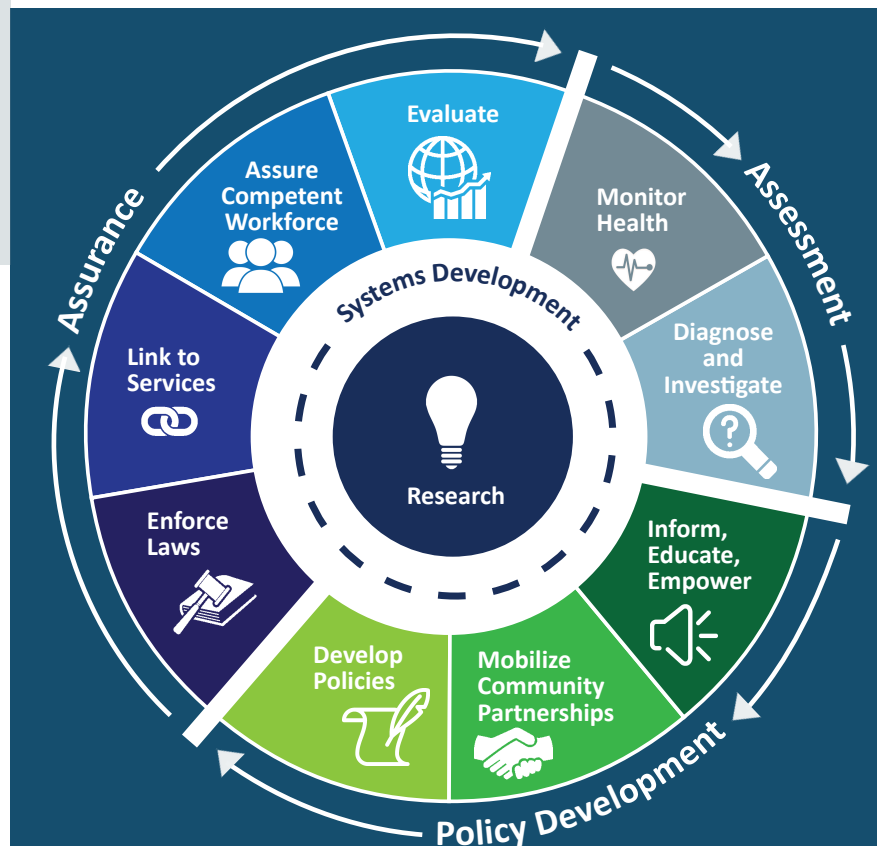
Local health departments (LHDs) are **Chief Health Strategists**—partnering across sectors to promote safety, prevention, and wellness to address that 80%.

Core Functions & 10 Essential Services of Public Health

ASSESSMENT: Collect and analyze information about health problems in Nebraska Communities.

POLICY DEVELOPMENT: Work with partners to apply data, educate the public, and develop programs and policies—all to address and prevent illness, disease, and disability.

ASSURANCE: Promote effective coordination and use of community resources to protect the health and wellbeing of Nebraskans.





WCDHD employs 12 full & part-time staff.

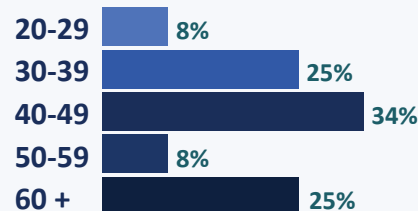
Our Team

WCDHD Staff Gender

100% Female

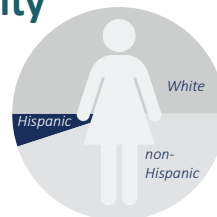


WCDHD Staff Age

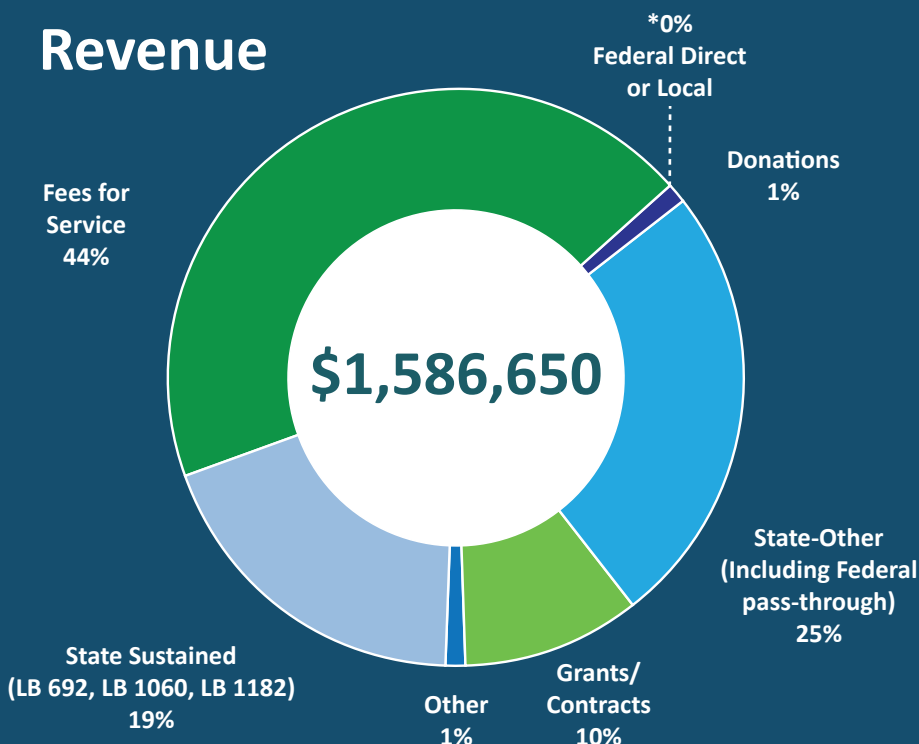


WCDHD Staff Race/Ethnicity

100% are White.
10% are Hispanic.
(90% are non-Hispanic.)



Revenue

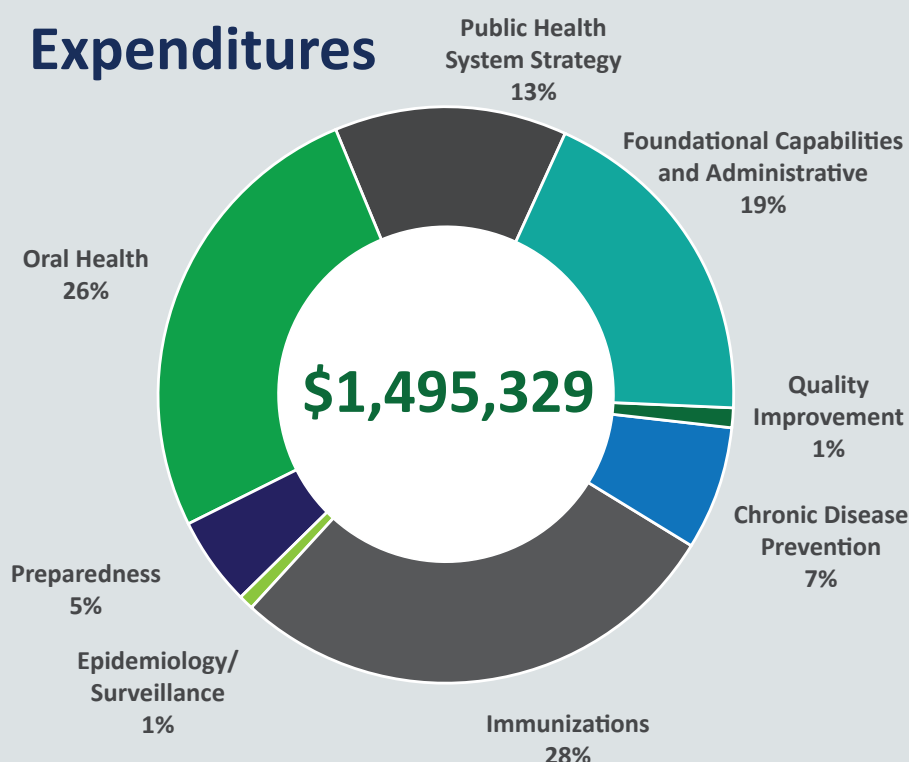


25% of WCDHD's FY 2018 revenue included federal dollars passed through from the state.

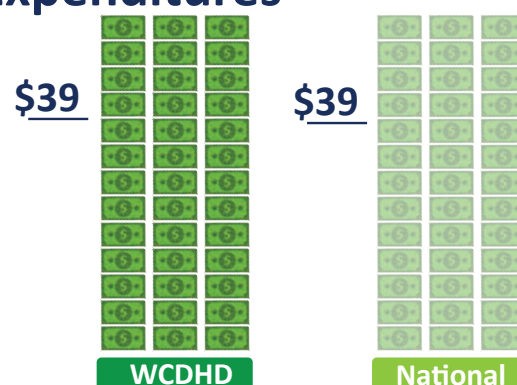
Dollars going to LHDs keep health care systems & communities strong.

19% of WCDHD's FY 2018 revenue came from the Nebraska Health Care Cash Fund and General Fund.

Expenditures



Per Capita Expenditures



Every **\$1** invested in prevention saves **\$5.60** in health care costs!

Worth the investment.