

North Central District Health Department

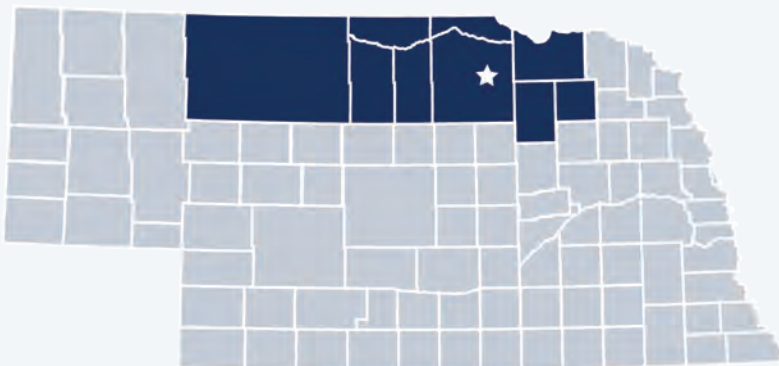
2019 Profile



Contact:

Roger Wiese, Director
Roger@ncdhd.ne.gov
(402) 336-2406
www.ncdhd.ne.gov

North Central District Health Department is locally governed and serves all **45,212** residents in **Antelope, Boyd, Brown, Cherry, Holt, Keya Paha, Knox, Pierce,** and **Rock** Counties.



Our Priorities

Public health priority areas included in our current Community Health Improvement Plan (CHIP):



Chronic Disease and Obesity

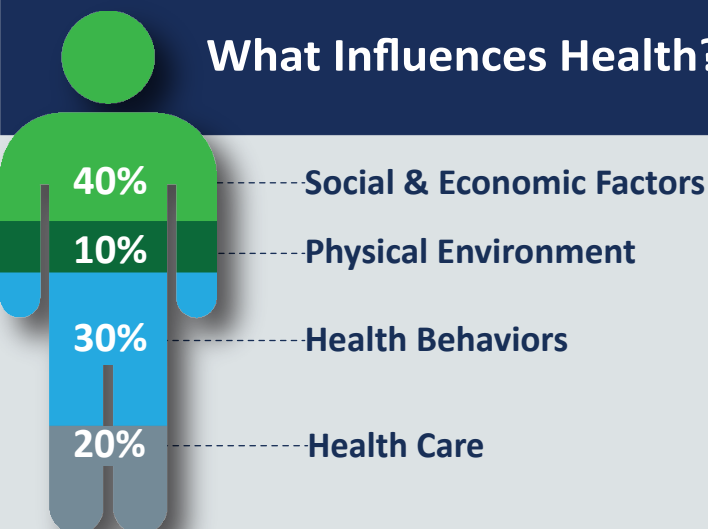


Aging



Wellness

What Influences Health?



80% of what influences health and wellbeing occurs outside of the clinical care setting—in homes, workplaces, schools, and communities.

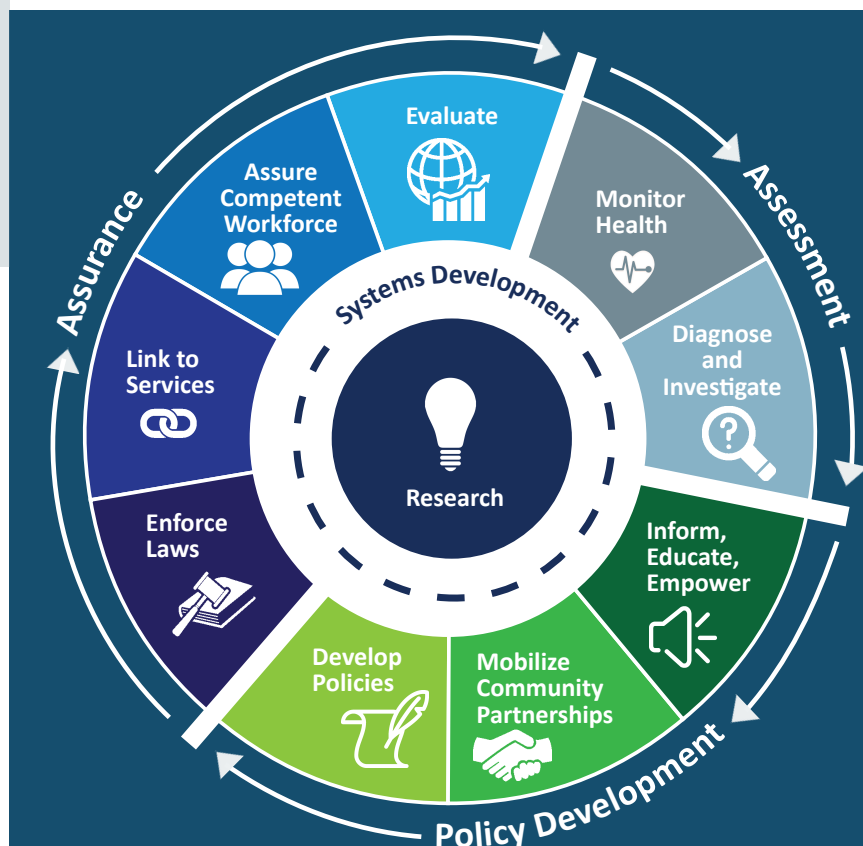
Local health departments (LHDs) are **Chief Health Strategists**—partnering across sectors to promote safety, prevention, and wellness to address that 80%.

Core Functions & 10 Essential Services of Public Health

ASSESSMENT: Collect and analyze information about health problems in Nebraska Communities.

POLICY DEVELOPMENT: Work with partners to apply data, educate the public, and develop programs and policies—all to address and prevent illness, disease, and disability.

ASSURANCE: Promote effective coordination and use of community resources to protect the health and wellbeing of Nebraskans.





NCDHD employs 8 full & part-time staff.

Our Team

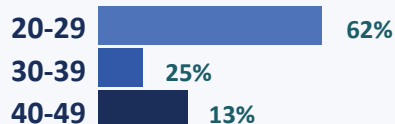
NCDHD Staff Gender

75% Female



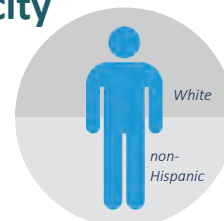
25% Male

NCDHD Staff Age

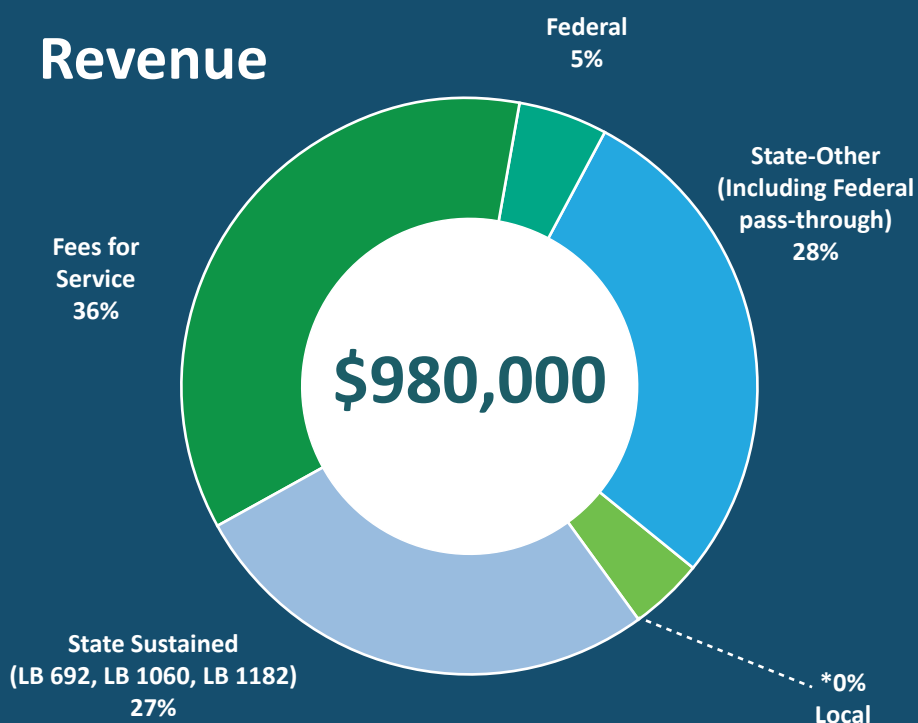


NCDHD Staff Race/Ethnicity

100% are White, non-Hispanic.



Revenue

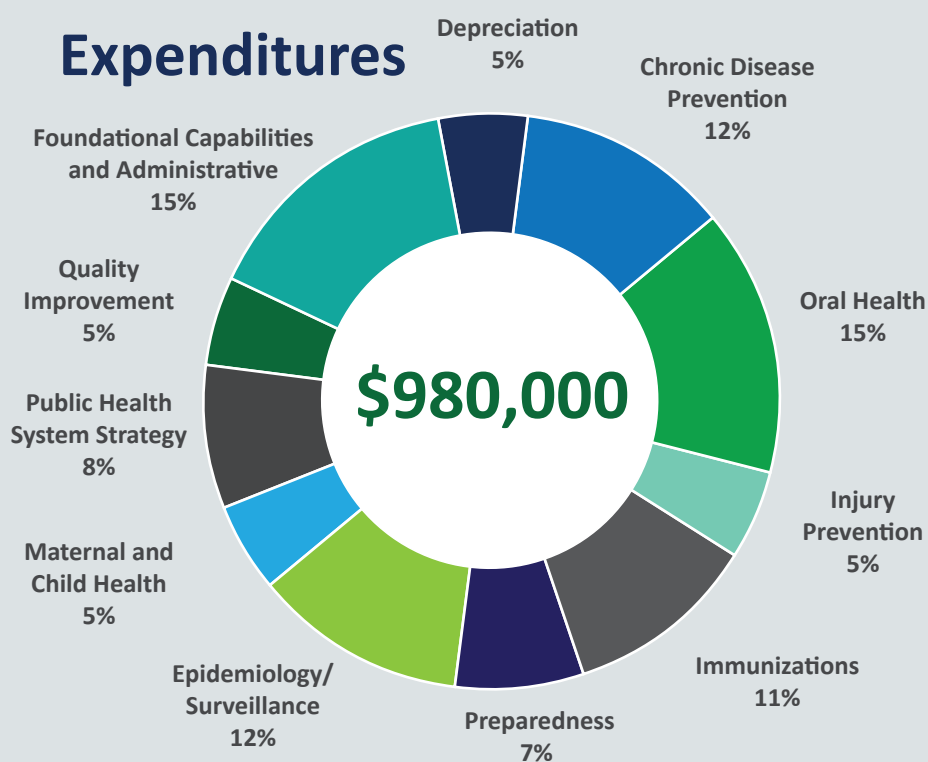


28% of NCDHD's FY 2018 revenue included federal dollars passed through from the state.

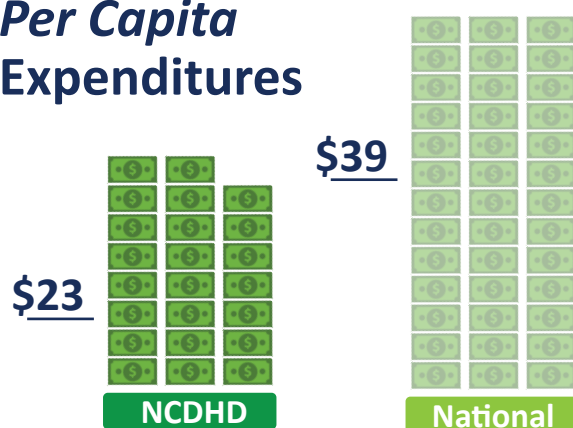
Dollars going to LHDs keep health care systems & communities strong.

27% of NCDHD's FY 2018 revenue came from the Nebraska Health Care Cash Fund and General Fund.

Expenditures



Per Capita Expenditures



Every **\$1** invested in prevention saves **\$5.60** in health care costs!

Worth the investment.