

Sarpy/Cass Health Department

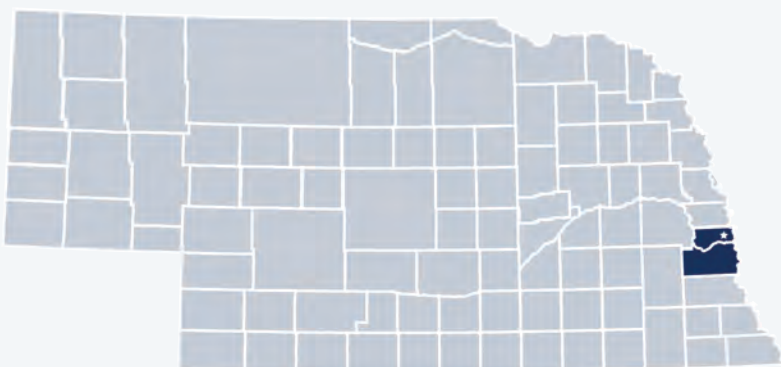
2019 Profile



Contact:

Sarah Schram, Director
sschram@sarpycasshealth.com
(402) 339-4334
www.sarpycasshealthdepartment.org

Sarpy/Cass Health Department is locally governed and serves all **207,328** residents in **Sarpy** and **Cass** Counties.



Our Priorities

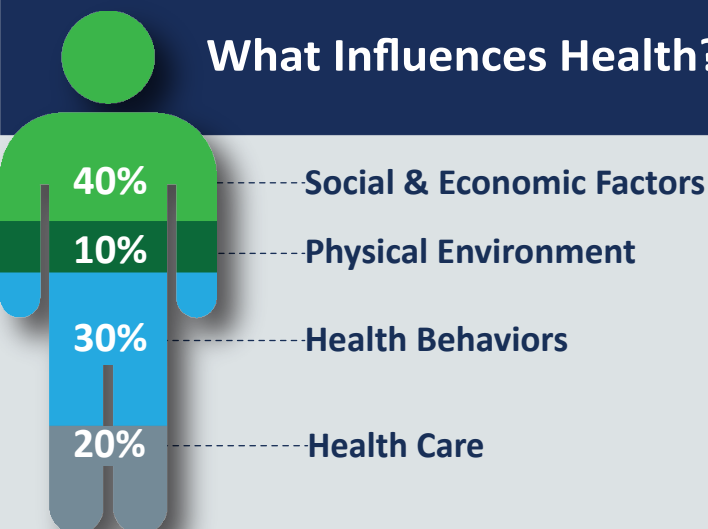
Public health priority areas included in our current Community Health Improvement Plan (CHIP):

+ Access to Healthcare Services

🧠 Mental Health

🍎🏃 Nutrition, Physical Activity and Weight Status

What Influences Health?



80% of what influences health and wellbeing occurs outside of the clinical care setting—in homes, workplaces, schools, and communities.

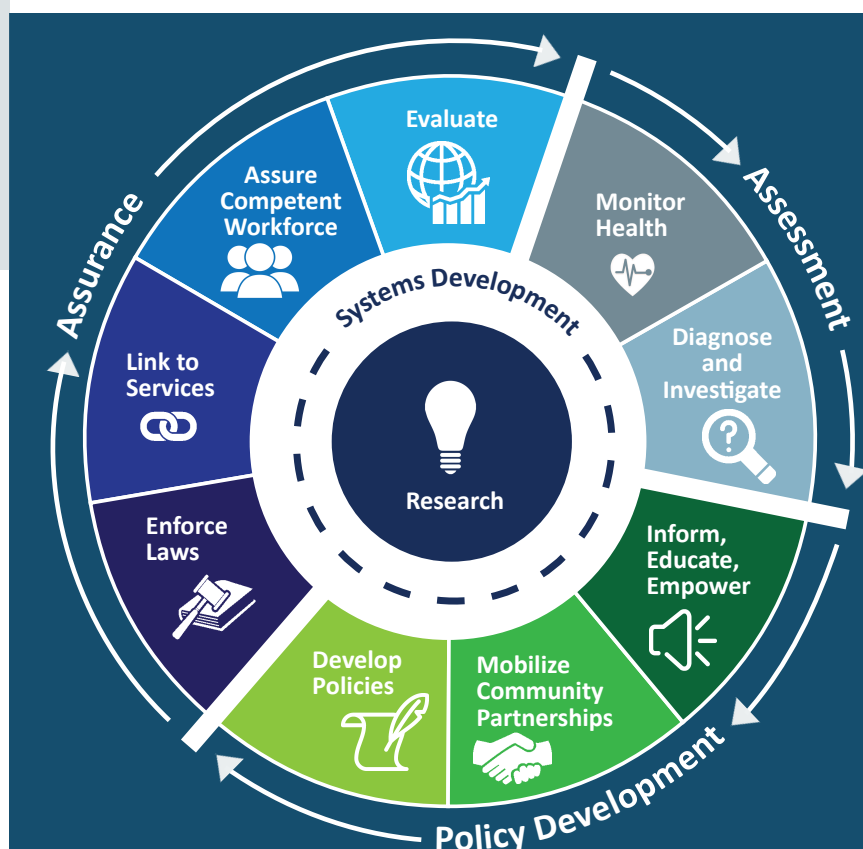
Local health departments (LHDs) are **Chief Health Strategists**—partnering across sectors to promote safety, prevention, and wellness to address that 80%.

Core Functions & 10 Essential Services of Public Health

ASSESSMENT: Collect and analyze information about health problems in Nebraska Communities.

POLICY DEVELOPMENT: Work with partners to apply data, educate the public, and develop programs and policies—all to address and prevent illness, disease, and disability.

ASSURANCE: Promote effective coordination and use of community resources to protect the health and wellbeing of Nebraskans.





SCHD employs 9
full & part-time staff.

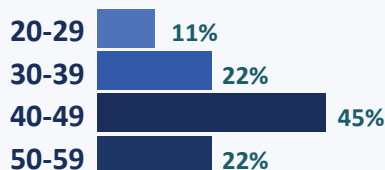
Our Team

SCHD Staff Gender

100%
Female



SCHD Staff Age

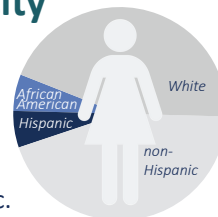


SCHD Staff Race/Ethnicity

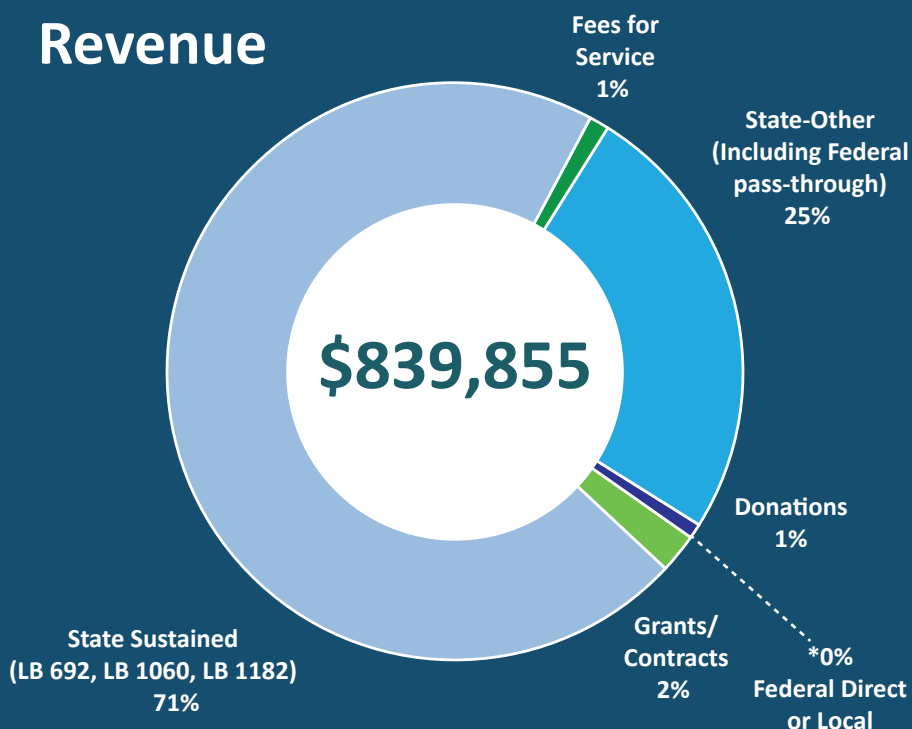
89% are White.

11% are African-American.

11% are Hispanic.
(89% are non-Hispanic.)



Revenue

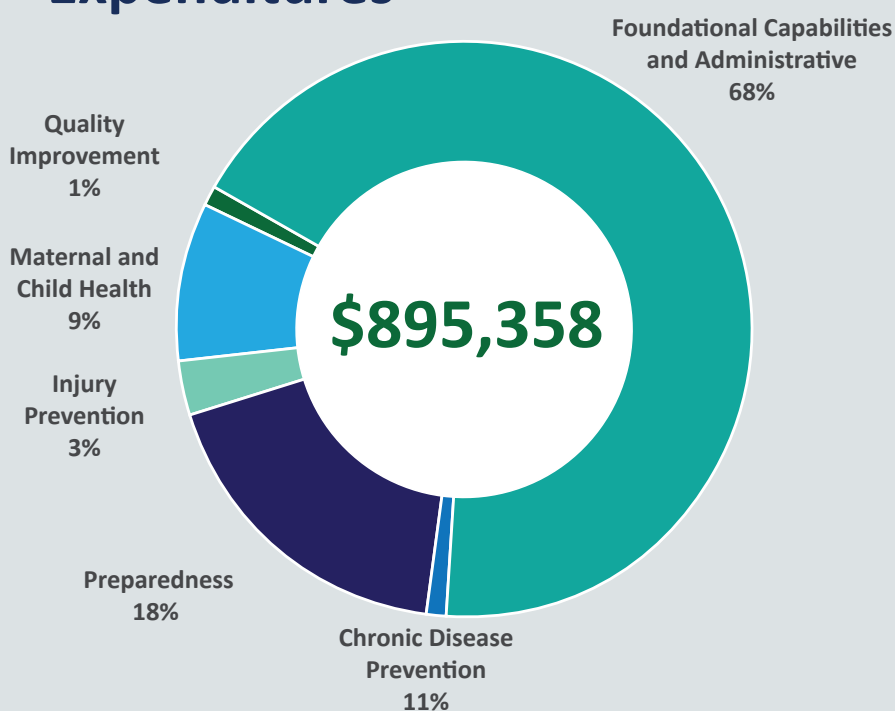


25% of SCHD's FY 2018 revenue included **federal dollars** passed through from the state.

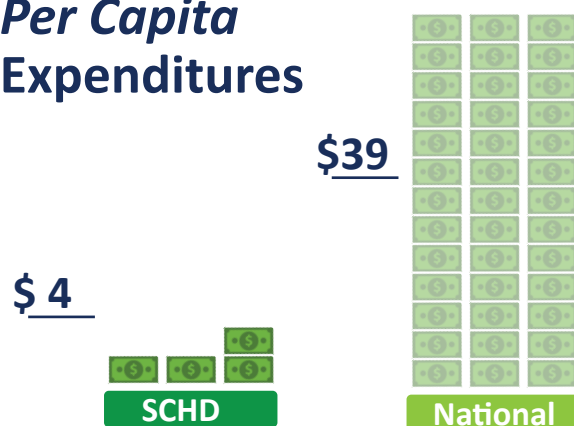
Dollars going to LHDs keep health care systems & communities strong.

71% of SCHD's FY 2018 revenue came from the **Nebraska Health Care Cash Fund and General Fund.**

Expenditures



Per Capita Expenditures



Every **\$1** invested in prevention **saves \$5.60** in health care costs!

Worth the investment.