

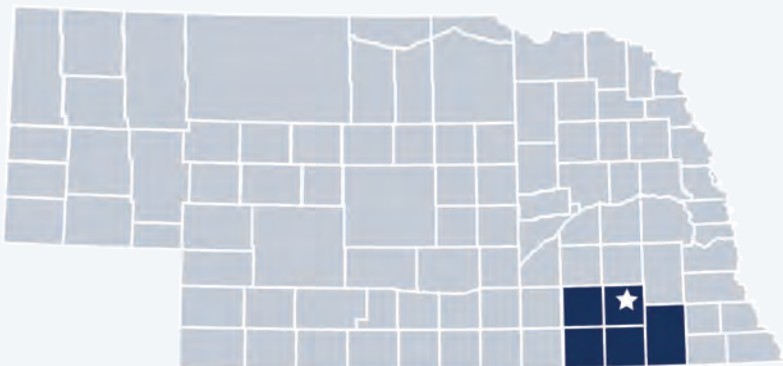
# Public Health Solutions District Health Department 2019 Profile



Contact:

Kim Showalter, Director  
kshowalter@phsneb.org  
(402) 826-3880  
www.phsneb.org

Public Health Solutions District Health Department is locally governed and serves all **53,847** residents in **Fillmore**, **Gage**, **Jefferson**, **Saline**, and **Thayer** Counties.

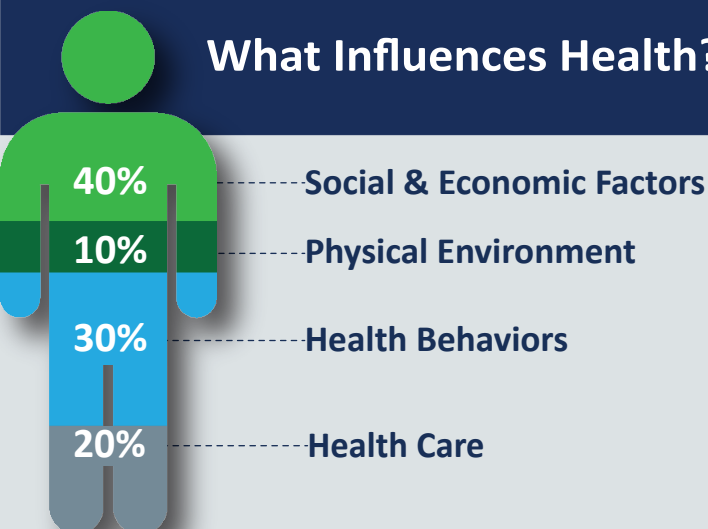


## Our Priorities

Public health priority areas included in our current Community Health Improvement Plan (CHIP):

- Access to Care**
- Behavioral / Mental Health**
- Chronic Disease**

## What Influences Health?



**80%** of what influences health and wellbeing occurs outside of the clinical care setting—in homes, workplaces, schools, and communities.

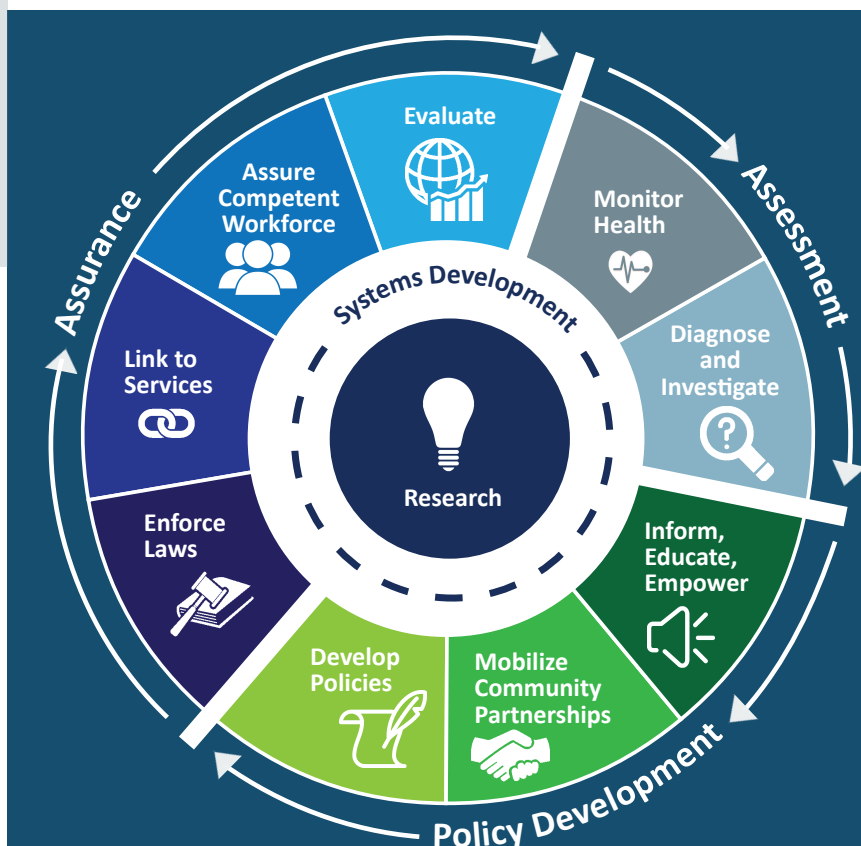
Local health departments (LHDs) are **Chief Health Strategists**—partnering across sectors to promote safety, prevention, and wellness to address that 80%.

## Core Functions & 10 Essential Services of Public Health

**ASSESSMENT:** Collect and analyze information about health problems in Nebraska Communities.

**POLICY DEVELOPMENT:** Work with partners to apply data, educate the public, and develop programs and policies—all to address and prevent illness, disease, and disability.

**ASSURANCE:** Promote effective coordination and use of community resources to protect the health and wellbeing of Nebraskans.





PHSDHD employs 19  
full & part-time staff.

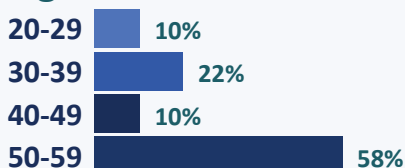
## Our Team

### PHSDHD Staff Gender

100%  
Female



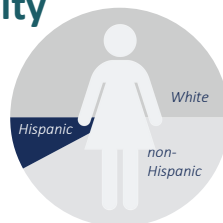
### PHSDHD Staff Age



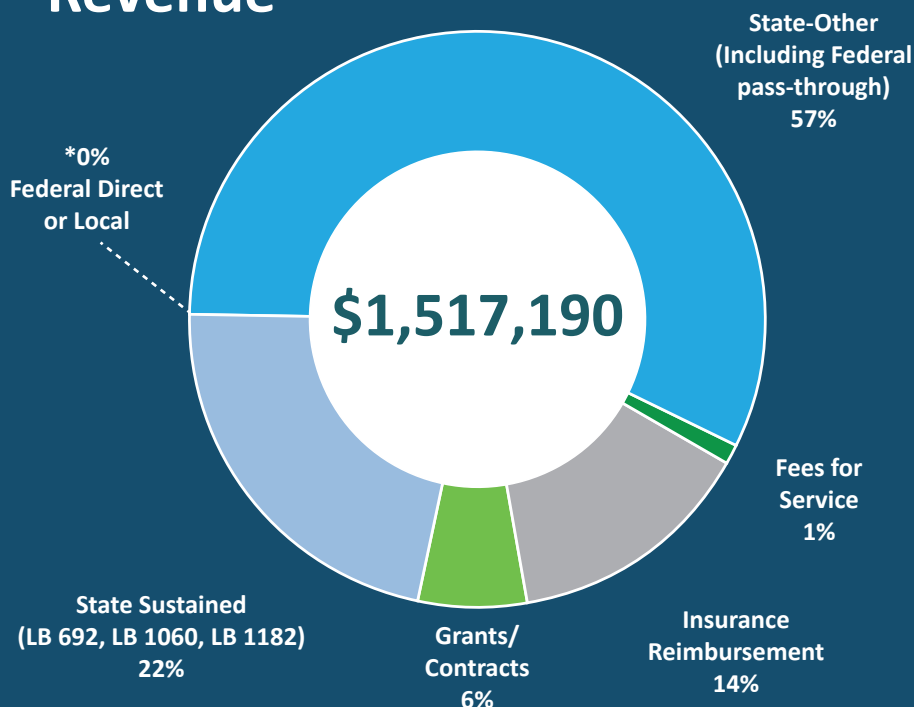
### PHSDHD Staff Race/Ethnicity

100% are White.

16% are Hispanic.  
(84% are non-Hispanic.)



## Revenue

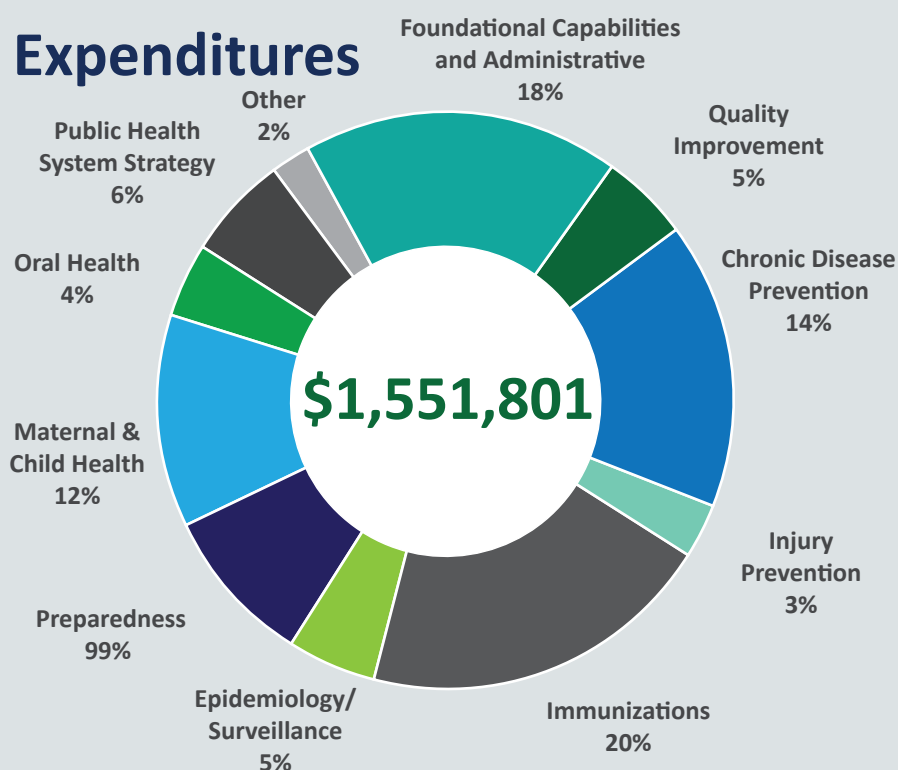


**57%** of PHSDHD's FY 2018 revenue included **federal dollars** passed through from the state.

Dollars going to LHDs keep health care systems & communities strong.

**22%** of PHSDHD's FY 2018 revenue came from the **Nebraska Health Care Cash Fund and General Fund.**

## Expenditures



## Per Capita Expenditures

\$29



PHSDHD

\$39



National

Every **\$1 invested** in prevention **saves \$5.60** in health care costs!

**Worth the investment.**