

Three Rivers Public Health Department

2019 Profile



Contact:

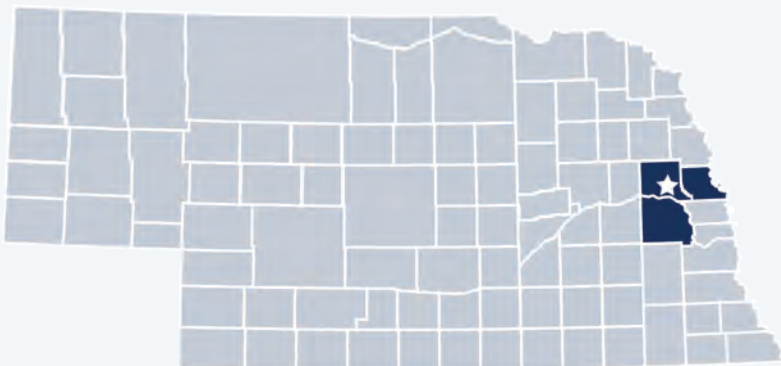
Terra Uhing, Director

terra@3rphd.org

(402) 727-5396

www.threeriverspublichealth.org

Three Rivers Public Health Department is locally governed and serves all **78,485** residents in **Dodge, Washington,** and **Saunders** Counties.



Our Priorities

Public health priority areas included in our current Community Health Improvement Plan (CHIP):

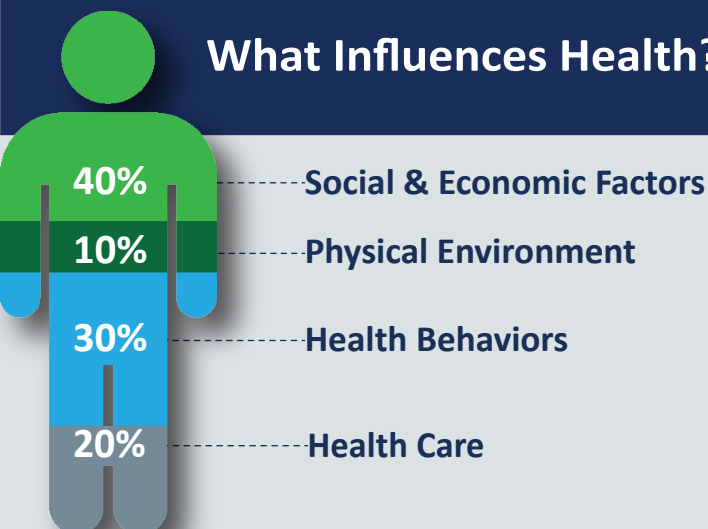
+ Access to Health

Mental Health Services

Preventative Health Education

Poverty & Workforce Education

What Influences Health?



80% of what influences health and wellbeing occurs outside of the clinical care setting—in homes, workplaces, schools, and communities.

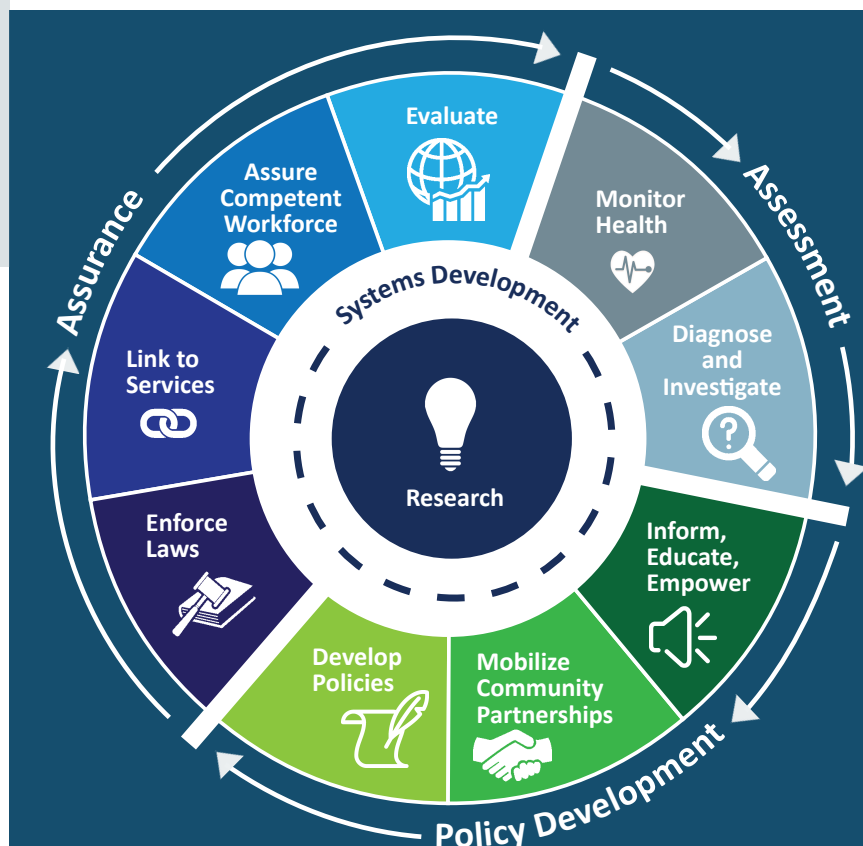
Local health departments (LHDs) are **Chief Health Strategists**—partnering across sectors to promote safety, prevention, and wellness to address that 80%.

Core Functions & 10 Essential Services of Public Health

ASSESSMENT: Collect and analyze information about health problems in Nebraska Communities.

POLICY DEVELOPMENT: Work with partners to apply data, educate the public, and develop programs and policies—all to address and prevent illness, disease, and disability.

ASSURANCE: Promote effective coordination and use of community resources to protect the health and wellbeing of Nebraskans.





3RPHD employs 19
full & part-time staff.

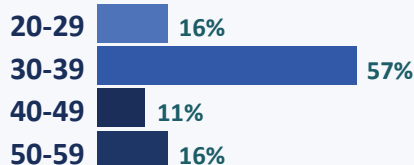
Our Team

3RPHD Staff Gender

100%
Female



3RPHD Staff Age

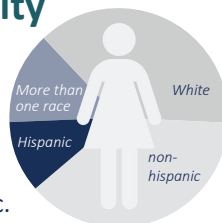


3RPHD Staff Race/Ethnicity

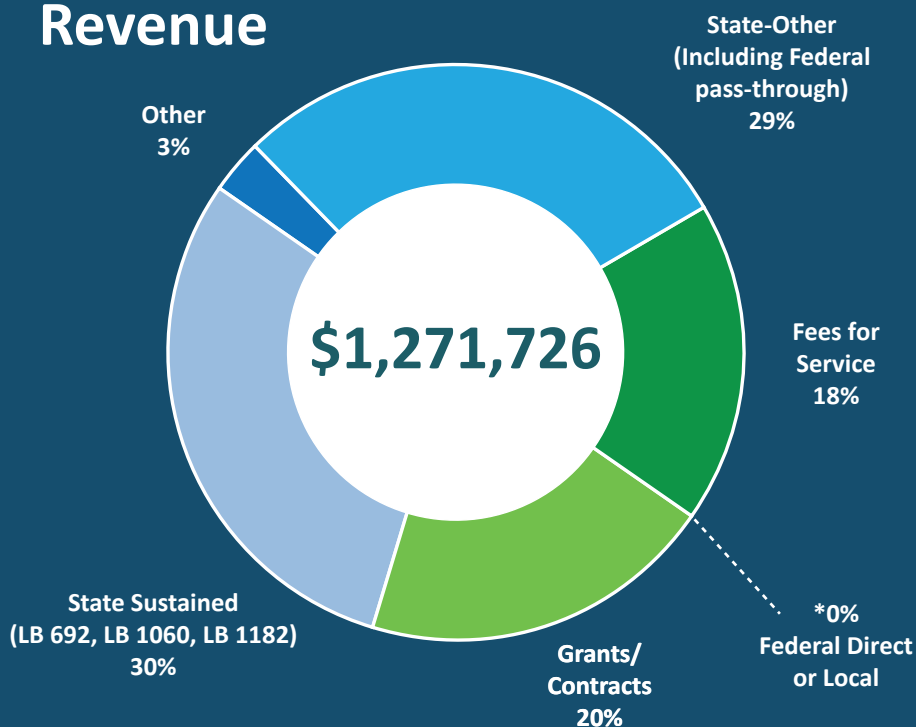
74% are White.

26% are more
than one race.

21% are Hispanic.
(79% are non-Hispanic.)



Revenue

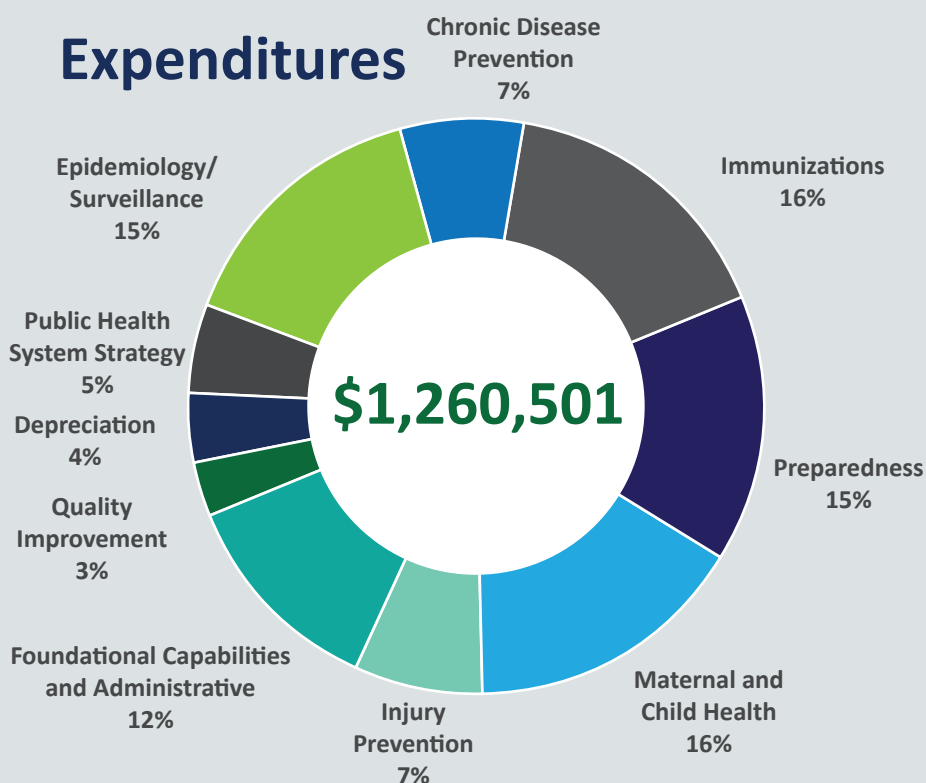


29% of 3RPHD's FY 2018
revenue included **federal dollars**
passed through from the state.

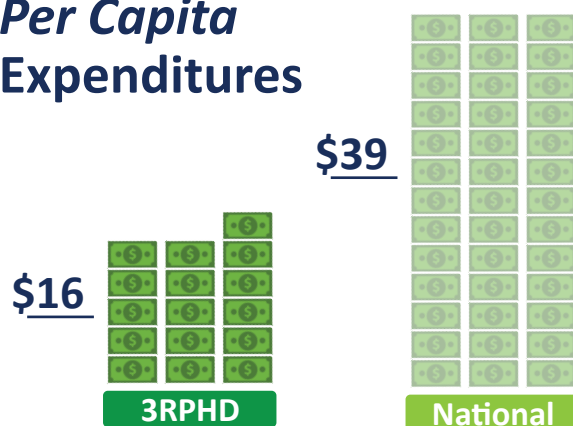
Dollars going to LHDs keep health
care systems & communities strong.

30% of 3RPHD's
FY 2018 revenue came from
the **Nebraska Health Care
Cash Fund and General Fund.**

Expenditures



Per Capita Expenditures



Every **\$1 invested** in prevention
saves \$5.60 in health care costs!

**Worth the
investment.**