



1

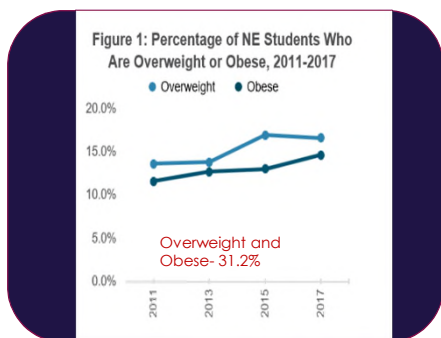


2



3

Nebraska Youth Obesity Data



Chronic Disease Prevention and Control Program | Division of Public Health, Nebraska
Department of Health and Human Services, YRBS 2011-2017

4

Health Problems Come to Class with Students Everyday



GOOD MORNING, TEACHER

5

In Nebraska, 227,350 people are struggling with hunger - and of them 82,070 are children.

1 in 8 people
struggles with hunger.

1 in 6
children
struggles with hunger.

People facing hunger in
Nebraska
are estimated to report needing

\$109,894,000

more per year to meet their food needs.

The average cost of a meal in Nebraska is \$2.83. Data from Feeding America's [Map the Meal Gap](#)

6

Why Mental Health?

Preschool-to-Prison Pipeline:

Without early intervention and support, children will continue to struggle and the challenges they face will multiply. Kids who are suspended or expelled from school are more likely to drop out and more likely to end up in the criminal justice system. Children with disabilities are more than twice as likely to be suspended as children without disabilities. Often the disability is an emotional disturbance and underlying mental health issue.

U.S. Department of Education (2013-2014).

7

Critical Health Risks for Young People in Nebraska

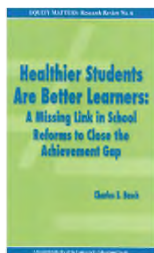
- Unintentional injuries
- Violence
- Alcohol/tobacco and other drug use
- Sexual risk behaviors
- **Mental Health concerns**
- **Physical inactivity**
- **Poor eating habits**
- **Asthma**



www.cdc.gov/healthyandacademics

8

Health Problems Perpetuate The Educational Achievement Gap



"No matter how well teachers are prepared to teach, no matter what accountability measures are put in place, no matter what governing structures are established for schools, educational progress will be profoundly limited if students are not motivated and able to learn. Health related problems play a major role in limiting the motivation and ability to learn..."

9

“To the doctor the child is a typhoid patient,
To the playground supervisor, a 1st baseman,
To the math teacher a learner of arithmetic.
At times he may be different things to each of these, but rarely is he/she a WHOLE child to any of them.”

From the 1930 report of the White House Conference on Children and Youth

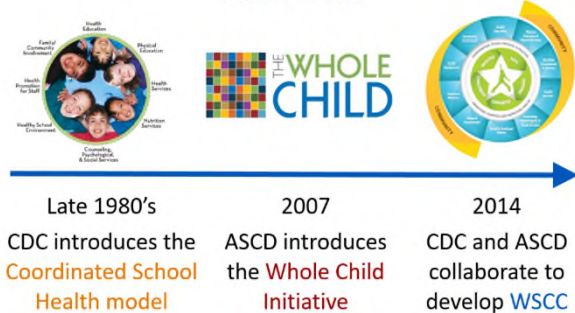
10

The Whole School, Whole Community, Whole Child Model



11

HISTORY



12

Five Child Health Tenants



13

WSCC Focus

- Places the child at the center
- Takes a comprehensive approach to supporting learning and health
- Calls for greater collaboration across sectors



14

THE WSCC MODEL IN ACTION

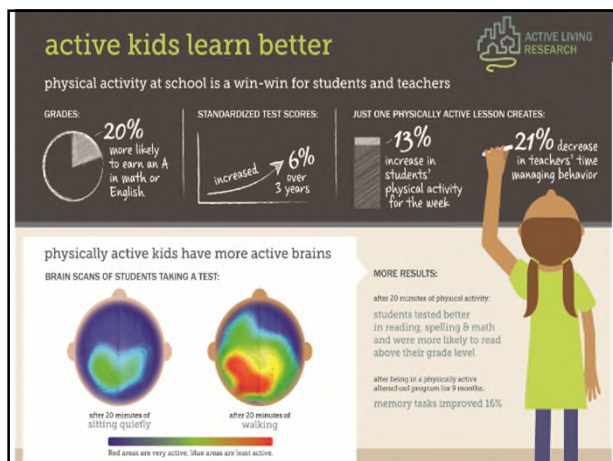
A framework that can be modified and adapted to meet the unique needs of districts, schools, and communities.



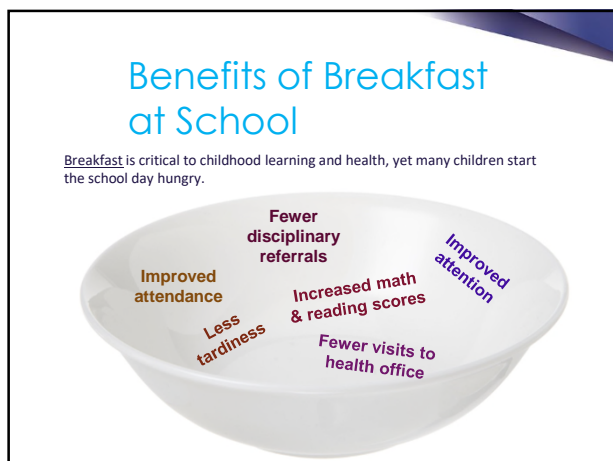
15



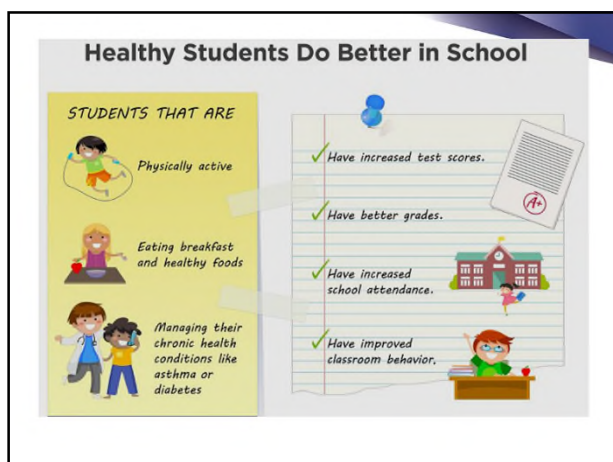
16



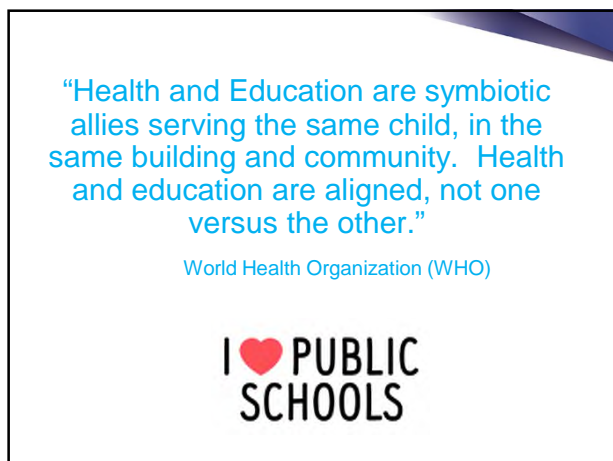
17



18



19



20
