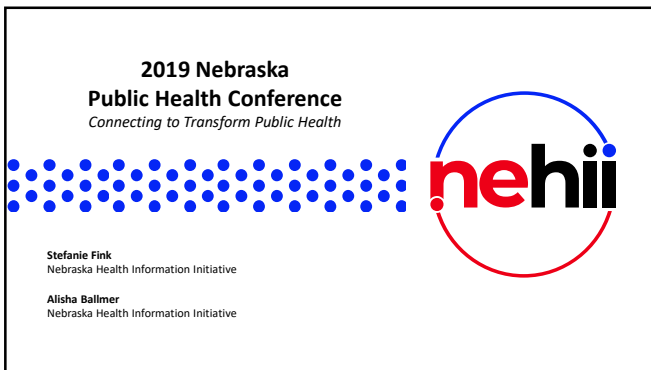
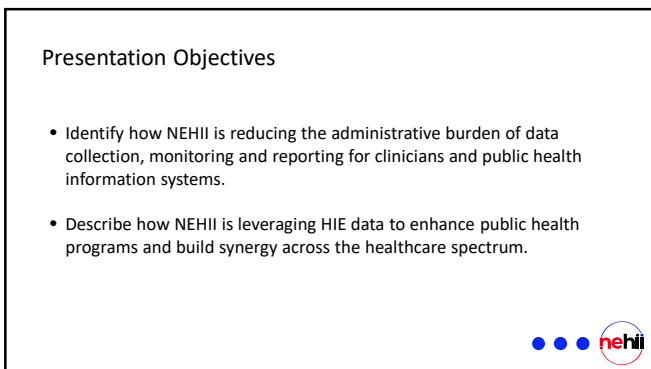




0




1



2


Nebraska Health Information Initiative (NEHII)


Mission: To bring trust and value to health information technology by creating solutions for moving health data forward.	Vision: Be a leader in the secure exchange of health information enabling a healthier Nebraska.	Purpose: Achieve health care transformation through community betterment collaboration while protecting the security and privacy of medical information.
70% of Acute Care Encounters	100% of Medications Dispensed	10,000 + Clinician Users





3

Value in Data Sharing



 Data sharing allows longitudinal patient information, test results, consult notes, orders, and procedures to be made available in the HIE to other providers across the state. This helps improve patient outcomes through more informed coordinated care and improved patient experience. It also contributes to healthcare cost containment by reducing avoidable readmissions, unnecessary and duplicate testing/labs.


 Data sharing allows for more accurate and efficient flow of information throughout the continuum of care. Decreased hunting, pecking and waiting for information and records. Reduced errors from patient self-reporting of history, medication lists, etc. which increases patient safety by reducing adverse drug events from allergies and interactions.



4

Value in Data Sharing

 Data sharing with NEHII allows facilities access to readmissions report providing opportunity to gain vision and information into where and why patients are being readmitted which can be actioned to avoid additional re-hospitalizations through alternate plans of care during the transition of care.

 Data sharing accommodates Promoting Interoperability (MU) requirements. It also helps reduce the number of data feeds to maintain with State Public Health reporting for reportable lab results, syndromic surveillance and immunizations.


 Data sharing demonstrates the facilities commitment to allow patients and all of their doctors to see their complete medical record outside of a particular healthcare system.




5

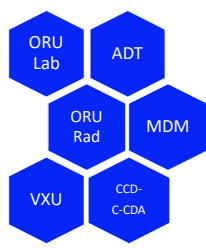

A robust health information exchange is foundational to population health

- NEHII minimizes service duplication, length of stay, avoidable admissions, and associated costs
- NEHII provides additional added value services
- NEHII helps reduce the administrative burden



6

Core Clinical Information Exchange

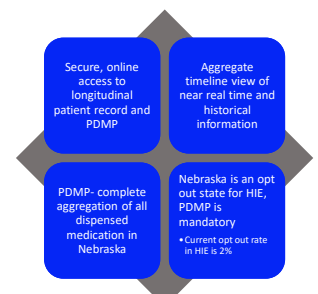




7

Public Health Support

Use Case #1

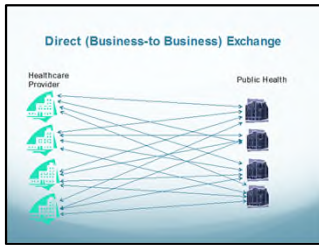
Clinical Data Repository Access

8

NEHII Strategic Priority Alignment

- Reduce the burden of reporting for Eligible Hospitals and Eligible Providers by streamlining the number of connections reducing associated costs to exchange health information.
- Support Eligible Hospitals and Eligible Providers to meet CMS Promoting Interoperability (Meaningful Use) requirements.



9

Public Health Support

Use Case #2

Promoting Interoperability

NEHII offers several ways for Hospitals and Providers to meet CMS Promoting Interoperability (Meaningful Use) requirements.

- Data Sharing in the HIE
- PDMP
- Syndromic Surveillance Registry
- Electronic Lab Reporting
- Immunization Registry
- Other Registry Reporting



10

Syndromic Surveillance

- NEHII has partnered with DPH to review the data elements to ensure comprehensive data capture, quality and normalization.
- NEHII has the capability to send feeds reducing the burden on DPH resources and Facilities.
- Near real time submissions allow data to be actionable at delivery.
- Legacy transport methods, updated technical, transmission, document, and vocabulary standards.
- Ongoing discussions to collaborate for enhancing and driving efficiencies.
- Future forecast.



11

Electronic Lab Reporting

- Electronic Lab Reporting (ELR) is the electronic transmission of laboratory reports which identify reportable conditions from laboratories to public health.
- NEHII is able to send the data to DPH for reporting to their ELR registry to reduce burden for facility and DPH resources.
- Currently, we have 3 facilities participating via NEHII delivery.
- NEHII is aligned as the HIE for the state to provide this service to reduce burden.



12

Immunization Gateway

- NEHII provides clinical immunization data to NESIIS and gives providers the immunization data query capability through the HIE.
- Difference between Uni-Directional and Bi-Directional Query function to NESIIS.
- Future forecast
- Legacy transport methods, updated technical, transmission, document, and vocabulary standards.
- Data quality and normalization for consumption.



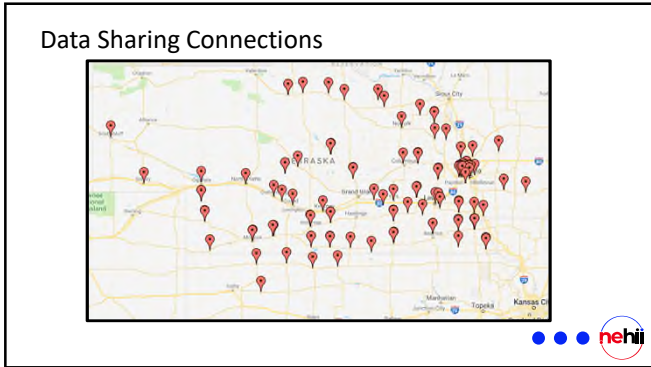
13

Methods to Sustain and Enhance Efforts

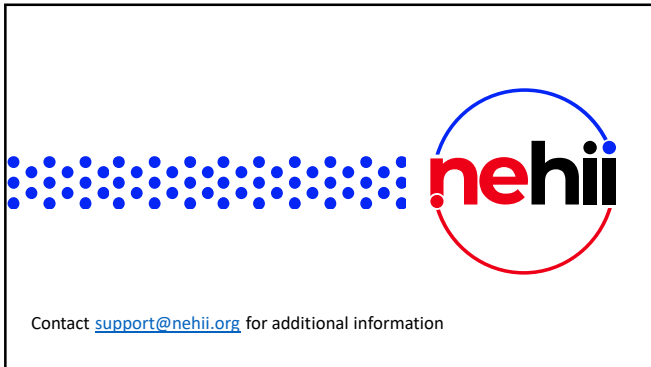
- Leadership support at NEHII and DPH
- Flexible technical solutions
- Aligned terminology and transport standards that meet public health data requirements.
- State and federal funding streams
- Privacy and security principles embedded in governance and architecture.
- A legal and policy environment that encourages standardized public health reporting through an HIE organization and permits secondary data use.
- Health IT partnerships that deliver affordable and efficient solutions.
- Moving toward synergistic community care through interoperability.



14



15



16
