

Southeast District Health Department

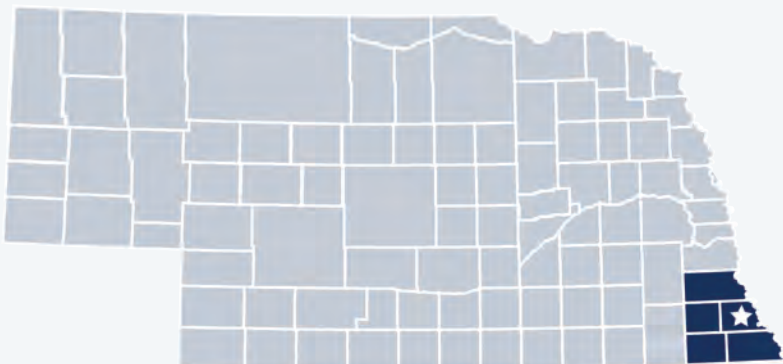
2019 Profile



Contact:

Grant Brueggemann, Director
grant@sedhd.org
(402) 274-3993
www.sedhd.org

Southeast District Health Department is locally governed and serves all **38,771** residents in **Johnson, Nemaha, Otoe, Pawnee** and **Richardson** Counties.



Our Priorities

Public health priority areas included in our current Community Health Improvement Plan (CHIP):



Chronic Disease



Cancer

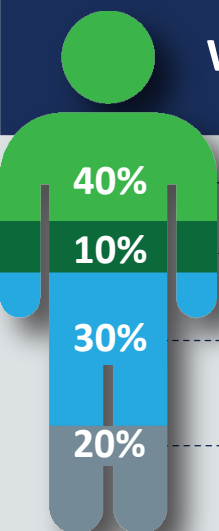


Behavioral Health



Substance Abuse

What Influences Health?



Social & Economic Factors

Physical Environment

Health Behaviors

Health Care

80% of what influences health and wellbeing occurs outside of the clinical care setting—in homes, workplaces, schools, and communities.

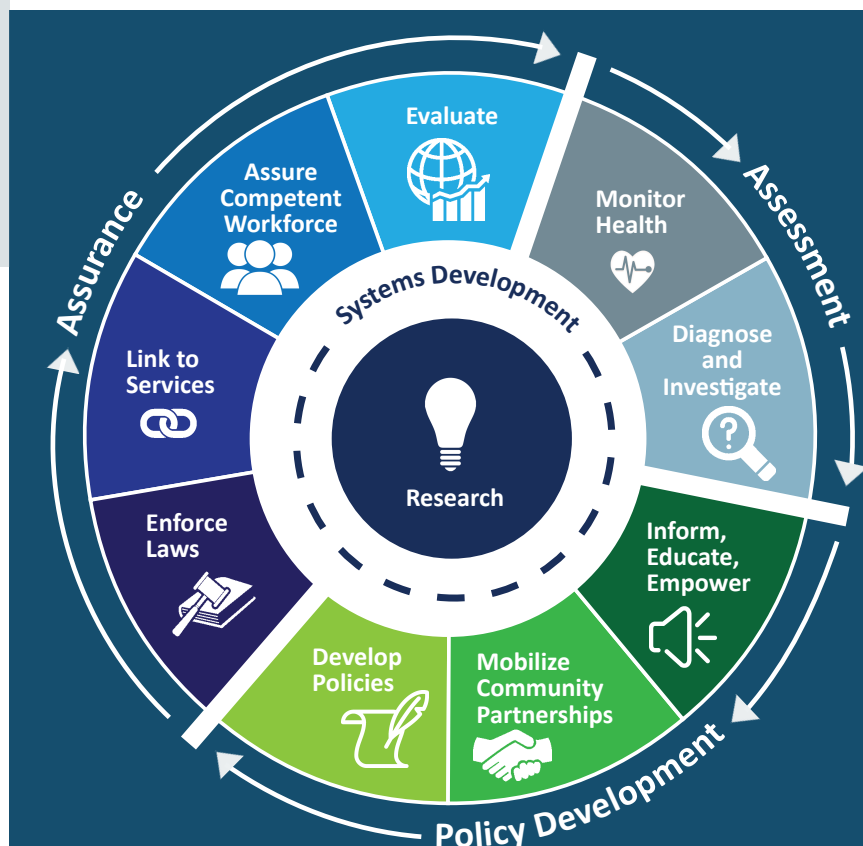
Local health departments (LHDs) are **Chief Health Strategists**—partnering across sectors to promote safety, prevention, and wellness to address that 80%.

Core Functions & 10 Essential Services of Public Health

ASSESSMENT: Collect and analyze information about health problems in Nebraska Communities.

POLICY DEVELOPMENT: Work with partners to apply data, educate the public, and develop programs and policies—all to address and prevent illness, disease, and disability.

ASSURANCE: Promote effective coordination and use of community resources to protect the health and wellbeing of Nebraskans.





SEDHD employs 10
full & part-time staff.

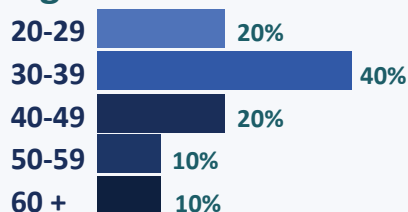
Our Team

SEDHD Staff Gender

90%
Female

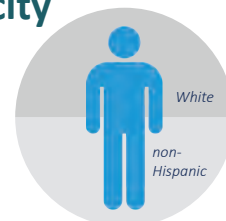
10%
Male

SEDHD Staff Age

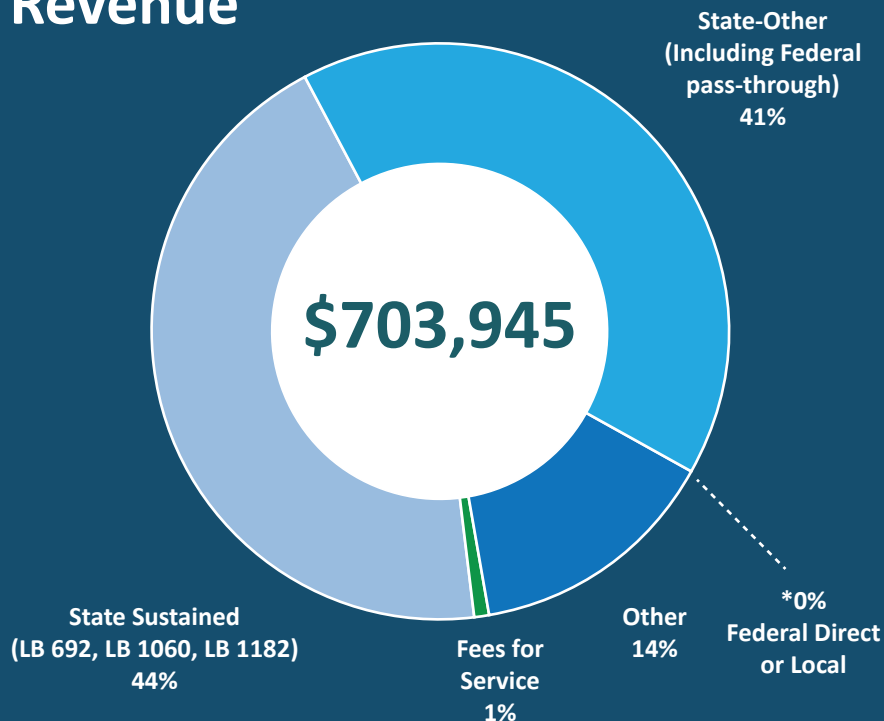


SEDHD Staff Race/Ethnicity

100% are White,
non-Hispanic.



Revenue

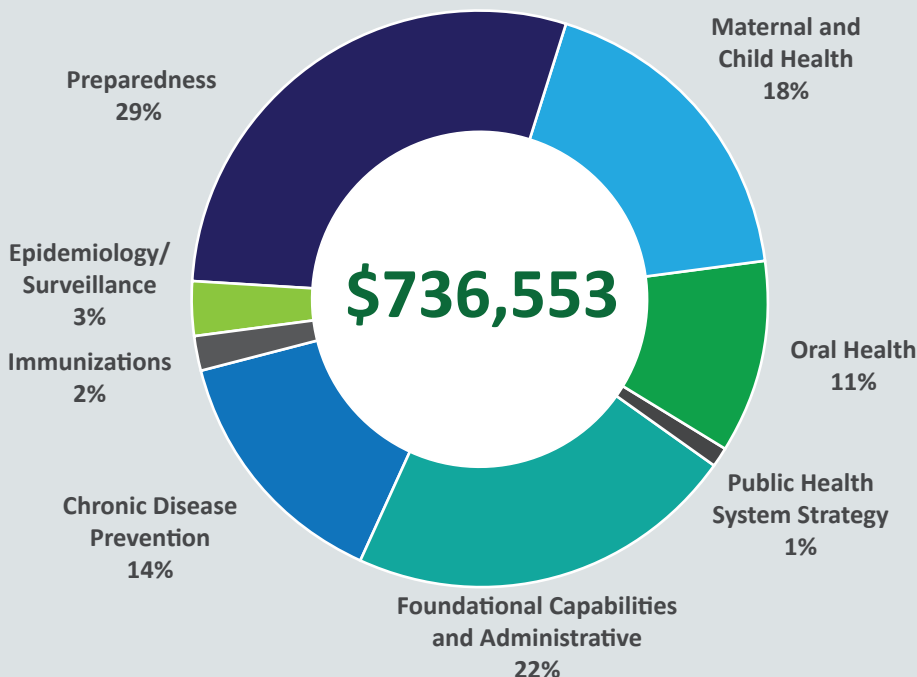


41% of SEDHD's FY 2018
revenue included **federal dollars**
passed through from the state.

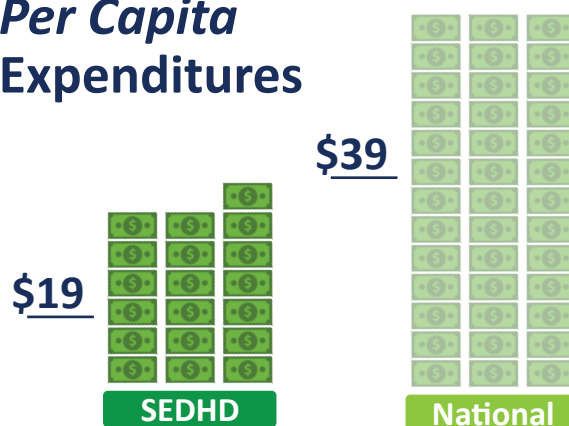
Dollars going to LHDs keep health
care systems & communities strong.

44% of SEDHD's
FY 2018 revenue came from
the **Nebraska Health Care**
Cash Fund and General Fund.

Expenditures



Per Capita Expenditures



Every **\$1 invested** in prevention
saves \$5.60 in health care costs!

**Worth the
investment.**