

South Heartland District Health Department

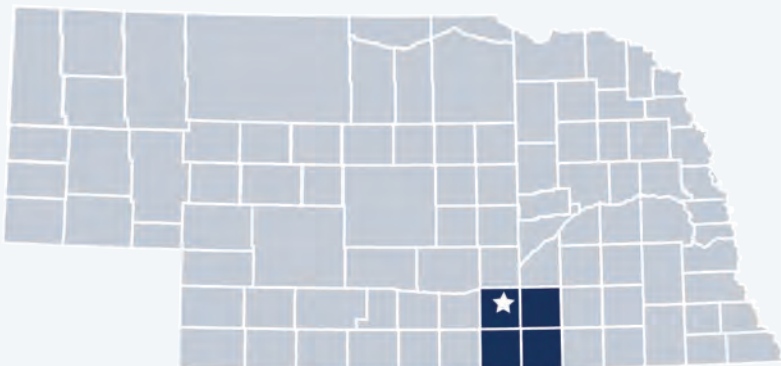
2019 Profile



Contact:






Michele Bever, Director
michele.bever@shdhd.org
(402) 462-6211
www.southheartland.org

South Heartland District Health Department is locally governed and serves all **45,682** residents in **Adams, Clay, Nuckolls,** and **Webster** Counties.

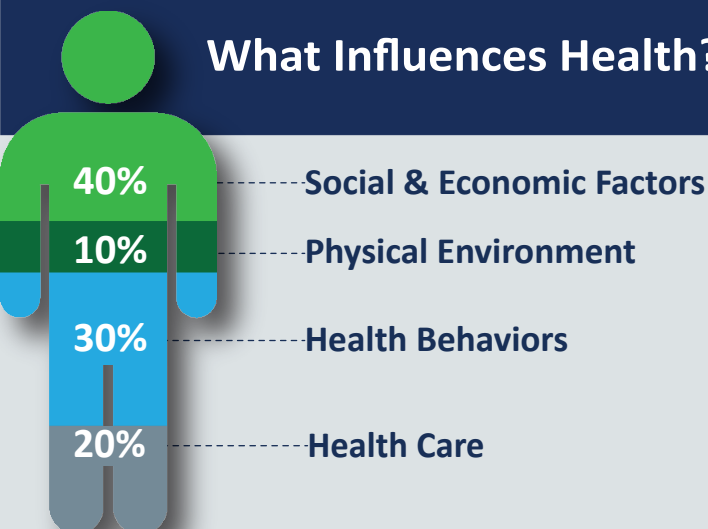


Our Priorities

Public health priority areas included in our current Community Health Improvement Plan (CHIP):

-  **Access to Health Care**
-  **Behavioral / Mental Health**
-  **Substance Misuse Prevention**
-  **Obesity & Related Conditions**
-  **Cancer**

What Influences Health?



80% of what influences health and wellbeing occurs outside of the clinical care setting—in homes, workplaces, schools, and communities.

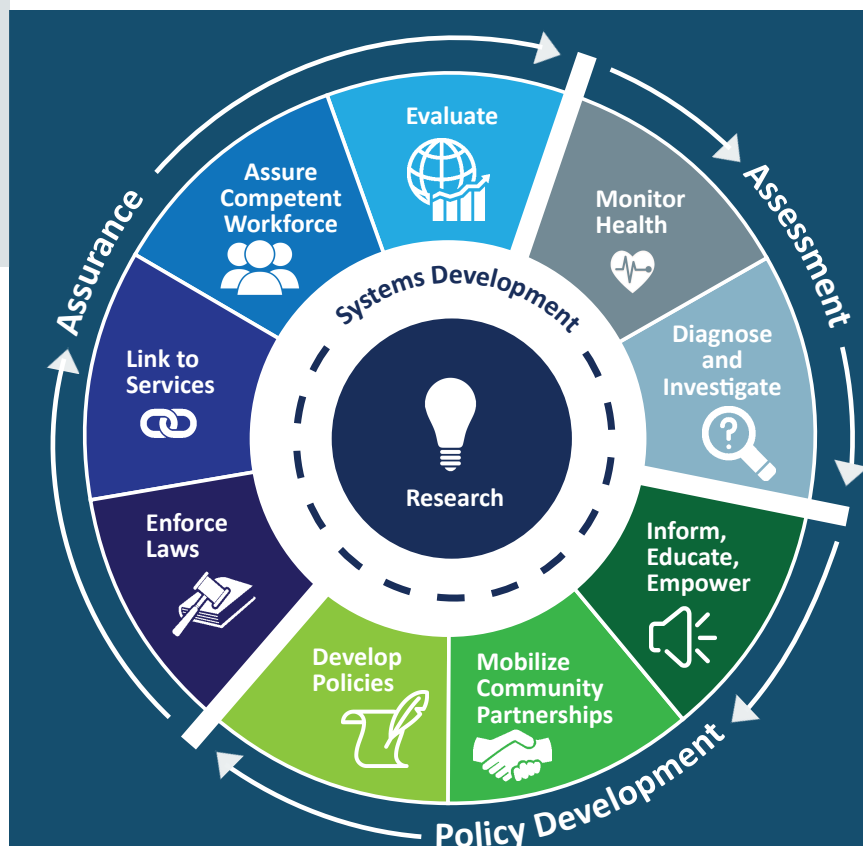
Local health departments (LHDs) are **Chief Health Strategists**—partnering across sectors to promote safety, prevention, and wellness to address that 80%.

Core Functions & 10 Essential Services of Public Health

ASSESSMENT: Collect and analyze information about health problems in Nebraska Communities.

POLICY DEVELOPMENT: Work with partners to apply data, educate the public, and develop programs and policies—all to address and prevent illness, disease, and disability.

ASSURANCE: Promote effective coordination and use of community resources to protect the health and wellbeing of Nebraskans.





SHDHD employs 14 full & part-time staff.

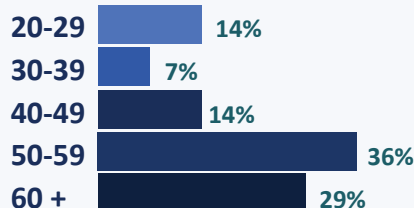
Our Team

SHDHD Staff Gender

78% Female

22% Male

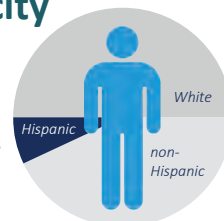
SHDHD Staff Age



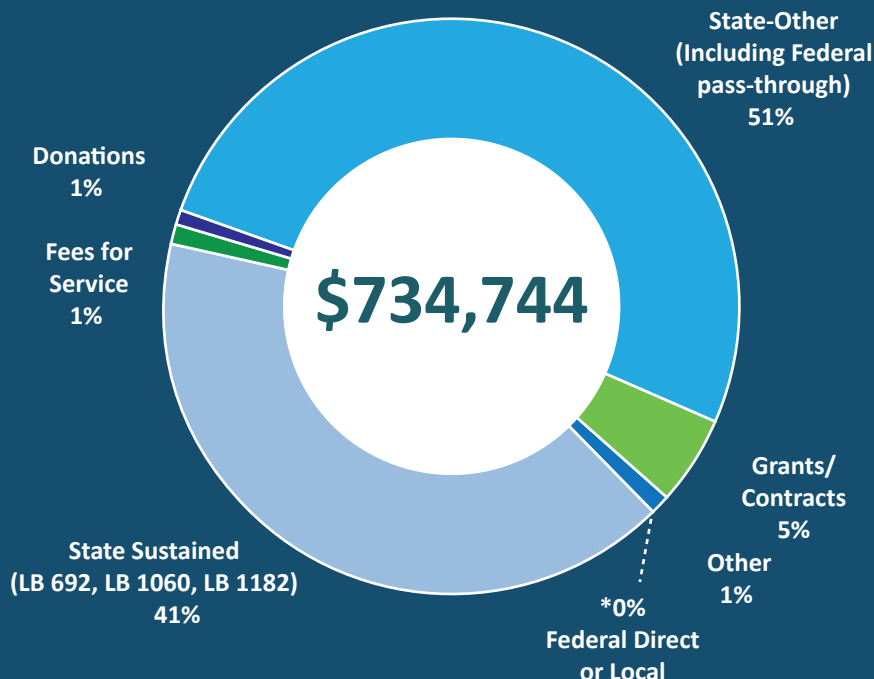
SHDHD Staff Race/Ethnicity

100% are White.

14% are Hispanic.
(86% are non-Hispanic.)



Revenue

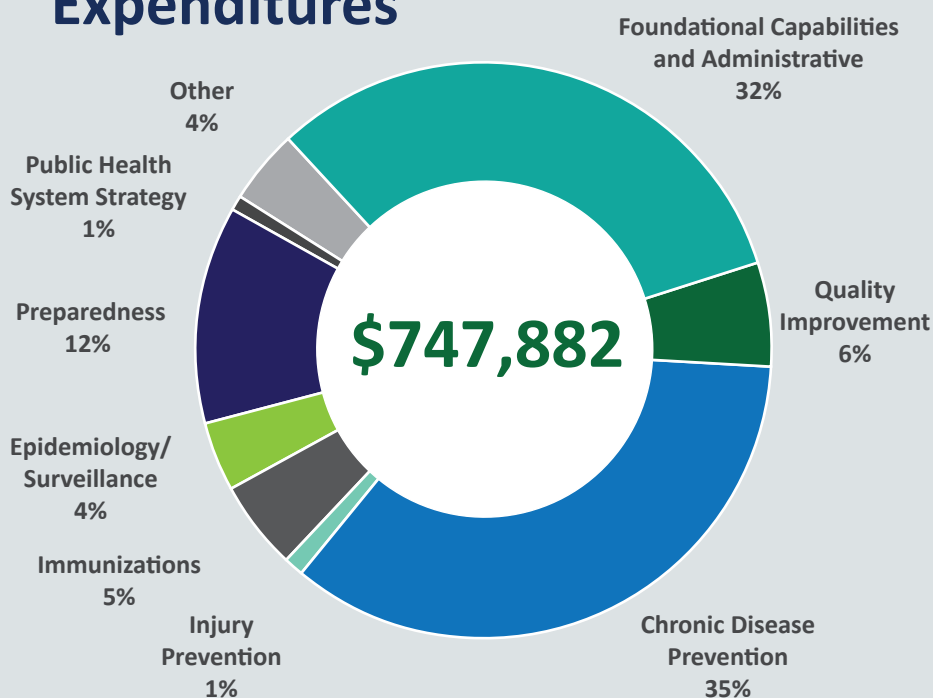


51% of SHDHD's FY 2018 revenue included **federal dollars** passed through from the state.

Dollars going to LHDs keep health care systems & communities strong.

41% of SHDHD's FY 2018 revenue came from the **Nebraska Health Care Cash Fund and General Fund.**

Expenditures



Per Capita Expenditures



Every **\$1** invested in prevention **saves \$5.60** in health care costs!

Worth the investment.