

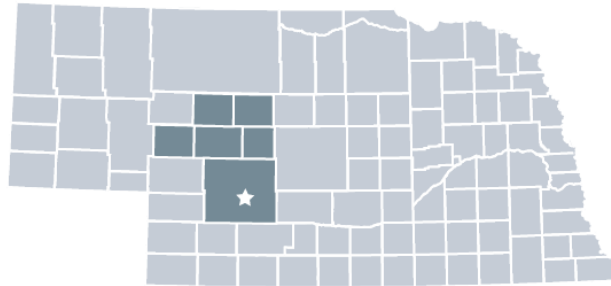


2023

ANNUAL REPORT

WEST CENTRAL DISTRICT HEALTH DEPARTMENT

"Healthy People, Healthy Communities."



LINCOLN, LOGAN, MCPHERSON, THOMAS, HOOKER, ARTHUR

Our Priorities

Like many public health departments, West Central District Health Department (WCDHD) has shifted focus from the COVID-19 pandemic's risk management back to empowering community well-being. This year, we completed strategic planning to reorient our focus and stabilize our infrastructure. Our 2022-2025 Strategic Plan priorities are: Develop Connections; Empowered Workforce; Board Engagement; Public Health Strategy; Maintain Standards; and Maximize Resources. This work has reenergized our mission and illuminated updates to our performance management practices as we prepared for reaccreditation. We have also reinstated and/or expanded several core public health programs that promote healthy outcomes and are updating our Community Health Assessment to inform future efforts. We are committed to reshaping the public health story and will be releasing a new Community Health Improvement Plan (CHIP) by the end of 2023. WCDHD is prioritizing our collaborative partnerships to support a strong system of care that empowers us all to do better, together.



Shannon Vanderheiden, BSN, MPH

Health Director

vanderheidens@wcdhd.org

19 employees | population 37,994

www.wcdhd.org

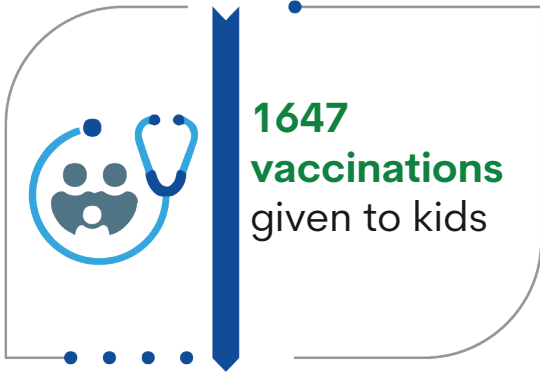
(308) 696 - 1201



Nationally Accredited

MATERNAL, CHILD, & FAMILY HEALTH

What we do: WCDHD's Vaccines for Children (VFC) program provides no-cost vaccines to underinsured and uninsured children. In FY 22-23, we provided 1647 vaccines (1490 childhood vaccines and 157 COVID vaccines). Our VFC program protects children from illness by providing affordable access to one of the most effective tools of public health.



COMMUNICABLE DISEASE CONTROL

What we do: WCDHD investigated 251 probable and confirmed disease cases. The top 3 diseases accounted for over 42% of those cases. They were hepatitis C, campylobacter, and norovirus. Timely prevention and control can stop disease outbreaks. In addition to hardships such as illness and absences from work or school, reportable diseases (including hepatitis C) can lead to serious illness or death.



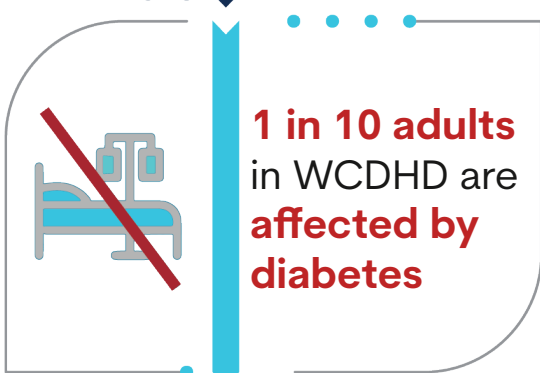
ACCESS TO & LINKAGE WITH CLINICAL CARE

What we do: WCDHD provides vaccines in all 6 counties, meeting residents where they are. 738 encounters were in long-term care facilities, and 453 were in businesses, homes, schools, and other community sites. Total encounters: 1191. By offering vaccination services across our rural area, we enable access and support the health of all community members.



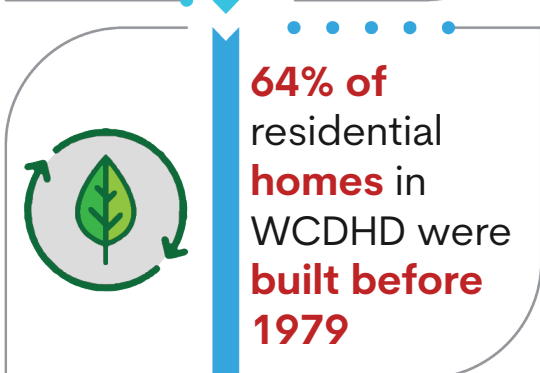
CHRONIC DISEASE & INJURY PREVENTION

What we do: WCHD works with families and young children in multiple programs. Building Healthy Families is a targeted program to address obesity. Marathon Kids is a fitness program that served 385 elementary-age children. Programs and events that support physical activity can help to prevent chronic diseases, like diabetes, that affect many WCDHD residents.



ENVIRONMENTAL PUBLIC HEALTH

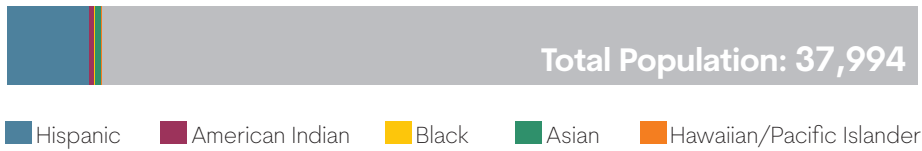
What we do: WCDHD worked with 11 probable and 6 confirmed cases of children with elevated blood lead levels. We educate families to avoid exposures and connect cases to medical treatment. Lead is especially toxic to children under age 6 and is often present in structures built before 1979. While the effect of lead poisoning may be permanent, if caught early, damage to a child's health can be reduced.



WEST CENTRAL DISTRICT HEALTH DEPARTMENT (WCDHD)

LINCOLN LOGAN MCPHERSON THOMAS HOOKER ARTHUR

Minority population: **12.7%**



5% of residents speak languages other than English
Common Languages: Spanish

Minority Health Initiative (MHI)



MHI eligible residents: **5,233**

Funds Received FY 2022-2023: **\$32,302**

Strategies & Outcomes

By leveraging diverse expertise and resources, we developed targeted interventions to address priority needs identified with our minority communities. We assisted with interpretation and translation across our six counties at health appointments and related to medical, financial, insurance, and Medicaid applications in FY 22-23. We collaborated with community partners on social determinates of health through several meetings involving minority and other community representatives. We used education opportunities to address health disparities and health equity.

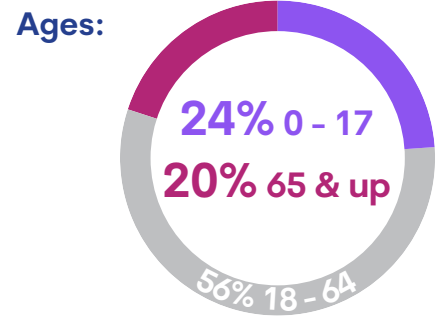
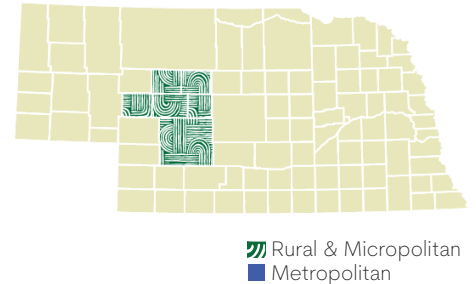
Other work helping all communities thrive

The MHI outreach programs were designed to create inclusive health and safety training for the Spanish speaking community. WCDHD sought to address 2 primary areas of need for the Hispanic population, First Aid and CPR and Water Safety. WCDHD's native Spanish-speaking Community Health Worker (CHW) delivered the first ever Spanish language First Aid/CPR/AED and Compression only CPR trainings. A total of 150 participants were engaged in active learning about important ways to keep children safe in, on, and around the water.

Other Demographics:

Based on total population: 37,994

6 Rural counties:



www.wcdhd.org

Shannon Vanderheiden | Director | vanderheidens@wcdhd.org



We speak English & Spanish!